

## Series JW

## High Inrush 10 & 16 Amp Rockers

# General Specifications

### Electrical Capacity (Resistive Load)

**Power Level:** 10A @ 125/250V AC for JWM & JWMW models; 10A @ 30V DC for JWMW;  
16A @ 125/250V AC for JWL & JWLW models; 5A @ 72V DC for telecommunication applications

### Other Ratings

**Contact Resistance:** 10 milliohms maximum for JWM & JWMW; 20 milliohms maximum for JWL & JWLW  
**Insulation Resistance:** 1,000 megohms minimum @ 500V DC  
**Dielectric Strength:** 2,000V AC minimum between contacts for 1 minute minimum;  
4,000V AC minimum between contacts & case for 1 minute minimum  
**Mechanical Life:** 25,000 operations minimum  
**Electrical Life:** 25,000 operations minimum  
**Nominal Operating Force:** JWM & JWMW Single Pole 3.92N & Double Pole 7.84N  
JWL Single Pole 5.00N & Double Pole 10.00N; JWLW Double Pole 10.00N  
**Angle of Throw:** 26°

### Materials & Finishes

<b>Rocker:</b>	Polyphenylene ether (UL94V-0)	<b>Contacts:</b>	JWM & JWMW: Silver alloy with silver plating
<b>Housing/Frame &amp; Barrier:</b>	Polyamide (UL94V-0)		JWL & JWLW: Silver alloy plus copper with
<b>Interior Seal for JWM &amp; JWL:</b>	Polyphenylene sulfide (UL94V-0)		silver plating
<b>Case/Base:</b>	Melamine (UL94V-0)	<b>Terminals:</b>	Brass with silver plating

### Environmental Data

**Operating Temperature Range:** -25°C through +70°C (-13°F through +158°F) for JWM & JWL;  
-25°C through +85°C (-13°F through +185°F) for panel seal JWMW & JWLW models  
**Humidity:** 90 ~ 95% humidity for 96 hours @ 40°C (104°F)  
**Vibration:** 10 ~ 55Hz with peak-to-peak amplitude of 1.5mm traversing the frequency range & returning in 1 minute; 3 right angled directions for 2 hours  
**Shock:** 50G (490m/s<sup>2</sup>) acceleration (tested in 6 right angled directions, with 5 shocks in each direction)  
**Sealing:** IP67 of IEC60529 standard for panel seal JWMW & JWLW models; dust resistant inner seal for others

### Installation

**Soldering Time & Temperature:** Manual Soldering: See Profile A in Supplement section.

### Standards & Certifications

**Flammability Standards:** UL94V-0 for rocker, housing, seal & case/base of JWL, JWM, JWMW & JWLW models

**TV Ratings for UL & CSA:** JWM (TV-5) Overload Test @ 120V AC for 50 operations:  
Steady State Current (rms) 7.5A; Minimum Inrush Current (peak) 111A.  
JWM (TV-5) Endurance Test @ 120V AC for 25,000 operations:  
Steady State Current (rms) 5A; Minimum Inrush Current (peak) 78A.  
JWL (TV-8) Overload Test @ 120V AC for 50 operations:  
Steady State Current (rms) 12A; Minimum Inrush Current (peak) 163A.  
JWL (TV-8) Endurance Test @ 120V AC for 25,000 operations:  
Steady State Current (rms) 8A; Minimum Inrush Current (peak) 117A.

**UL:** File No. E44145  
JWM & JWMW models recognized at 10A @ 250V AC.  
JWMW recognized at 10A @ 30V DC.  
JWL & JWLW models recognized at 16A @ 250V AC; JWL at 5A @ 72V DC.

#### Models below recognized only when ordered with marking on switch.

JWMW: add "/U" to end of part number to order UL mark on switch; add "/CUL" to end of part number to order cULus mark on switch.  
JWL: add "/U-DC" to end of part number to request UL rating on DC rated switch.

**CSA:** File No. 023535\_0\_000  
JWM & JWMW models certified at 10A @ 250V AC; JWL models certified at 16A @ 250V AC

**VDE:** License No. 115674  
JWM models approved at steady state 5A, inrush 80A, resistive 10A, & motor load 6A all at 250V AC; JWL models approved at steady state inrush 128A, resistive 16A, & motor load 8A all at 250V AC.  
Note: JWM & JWL Double Pole, Single Throw models approved only with the international ON-OFF symbols on the actuator.

## High Inrush 10 & 16 Amp Rockers

## Series JW

# Distinctive Characteristics

Industry's first molded rocker with TV rating. Designed to handle large inrush current, with high electrical capacity of 10 and 16 Amps. JWM models certified for TV-5 rating and JWL models for TV-8 rating.

JWMW and JWLW panel seal versions meet IP67 of IEC60529 Standards (similar to NEMA 4 and 6).

Prominent external insulating barriers increase insulation resistance and dielectric strength.

Uniquely constructed to break light contact welds.

Increased electrical life with specially designed plate to minimize contact bounce.

Constructed for dust resistance with interior cover between actuator and contact area.

Terminals are molded in and epoxy sealed to lock out flux, dust, and other contaminants.

Solder lug/quick connect terminals can be used with connector.

Housing and case of heat resistant resin meet UL94V-0 standard.



Actual Size JWM



# Series JW

## High Inrush 10 & 16 Amp Rockers

### TYPICAL SWITCH ORDERING EXAMPLE

**JW**

Ratings	
<b>M</b>	10A @ 125/250V AC
<b>MW</b>	Panel Seal 10A @ 125/250V AC
<b>L</b>	16A @ 125/250V AC
<b>LW</b>	Panel Seal 16A @ 125/250V AC

**Poles**

<b>1</b>	SPST SPDT
<b>2</b>	DPST DPDT

Notes:  
DPST must have international  
ON-OFF symbols for VDE  
approval.  
JWLW available in DPST &  
DPDT only.

Circuits			
<b>1</b>	ON	NONE	OFF
<b>2</b>	ON	NONE	ON

**LW**

**2**

**1**

**R**

**A**

**1**

**A**

—

Barrier Types	
<b>R</b>	No Barrier
<b>B</b>	With Barrier

Note: JWMW & JWLW  
combine with code R only.

Cap Colors	
<b>A</b>	Black
<b>B</b>	Ivory
<b>C</b>	Red
<b>H</b>	Gray

Note: JWMW & JWLW avail-  
able with black or red caps only.

Inscription Orientation	
<b>No Code</b>	No Inscription
<b>1</b>	Horizontal
<b>2</b>	Vertical

These are inscriptions for  
Single Throw models only.

Housing Colors	
<b>A</b>	Black
<b>B</b>	Ivory
<b>H</b>	Gray

Note: JWMW & JWLW  
available with black only.

Barrier Colors	
<b>A</b>	Black
<b>B</b>	Ivory
<b>H</b>	Gray

**IMPORTANT:**

Standard markings for JWM & JWL:  
TV Rating, UL, CSA & VDE.  
Standard marking for JWLW: cULus.  
Specific models, ratings & ordering  
instructions for international approvals  
are noted on General Specifications page.

### DESCRIPTION FOR TYPICAL ORDERING EXAMPLE

**JWLW21RA1A**

Black Rocker Cap with  
International ON-OFF Symbols  
in Horizontal Orientation



Black Housing

DPST  
ON-NONE-OFF Circuit

16A @ 125/250V AC

## High Inrush 10 & 16 Amp Rockers

## Series JW

### RATINGS



Power Level 10A @ 125/250V AC



Panel Seal Power Level 10A @ 125/250V AC



Power Level 16A @ 125/250V AC



Panel Seal Power Level 16A @ 125/250V AC

### POLES & CIRCUITS

Pole	Model	Rocker Position			Connected Terminals			Throw & Schematics
		Down 	Center	Up 	Down 	Center	Up 	
SP	JWM11 JWMW11 JWL11	ON	NONE	OFF	1-1b	OPEN	OPEN	SPST 
SP	JWM12 JWMW12 JWL12	ON	NONE	ON	1-1b	OPEN	1-1a	SPDT 
DP	JWM21 JWMW21 JWL21 JWLW21	ON	NONE	OFF	1-1b 2-2b	OPEN	OPEN	DPST 
DP	JWM22 JWMW22 JWL22 JWLW22	ON	NONE	ON	1-1b 2-2b	OPEN	1-1a 2-2a	DPDT 

### BARRIER TYPES & COLORS



No Barrier



JWM



JWL

No-barrier type has a flat flange which is an integral part of the switch.

JWMW and JWLW panel seal devices have exterior seal of acrylonitrile butadiene rubber covering the flange.

Flange/Housing Material: Polyamide

Finish: Matte



With Barrier



JWM



JWL

Barrier type designates that either AT217 (for JWM) or AT218 (for JWL) is factory assembled. Dimensions for barriers are shown in the Accessories section.

Barrier Colors Available:



Black



Ivory



Gray

Barrier Material: Polyamide

Finish: Matte

### CAP COLORS



Cap Colors Available:



Black



Ivory



Red



Gray

Cap Material: Polyphenylene Oxide

Finish: Matte

Rocker cap is an integral part of the switch and not available separately.

JWMW and JWLW available with black or red caps only.

# Series JW

## High Inrush 10 & 16 Amp Rockers

### INSCRIPTIONS

**No Code**

No Inscription



DPST models without inscriptions do not have VDE approval.

**1**

Inscription for Horizontal Mounting



**2**

Inscription for Vertical Mounting



The IEC symbols for On-Off are supplied with Single Throw models only.  
Orientation of inscription must be selected.  
Inscription Colors: Black ink on Ivory or Gray cap. White ink on Black or Red cap.  
Contact factory for other inscriptions.

### HOUSING

Material: Polyamide

Finish: Matte

Colors Available:

**A**

Black

**B**

Ivory

**H**

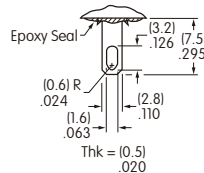
Gray

JWMW and JWLW panel seal models available with black housing only.

### TERMINALS

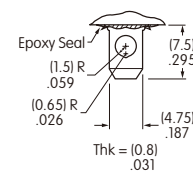
Solder Lug/Quick Connect .110" (2.8mm)

JWM & JWMW



Solder Lug/Quick Connect .187" (4.75mm)

JWL & JWLW



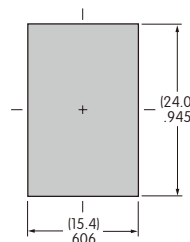
### PANEL CUTOUTS

#### Panel Thickness Range

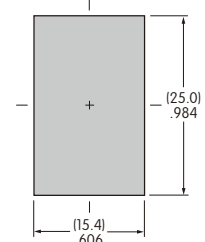
Without Barrier (JWM & JWMW):  
.039" ~ .157" (1.0mm ~ 4.0mm)

With Barrier (JWM):  
.024" ~ .126" (0.6mm ~ 3.2mm)

JWM



JWMW

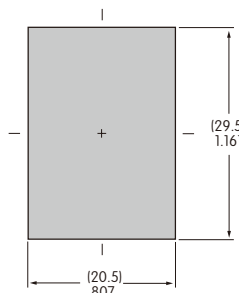


#### Panel Thickness Range

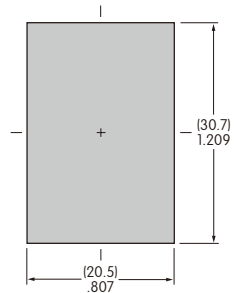
Without Barrier (JWL & JWLW):  
.039" ~ .157" (1.0mm ~ 4.0mm)

With Barrier (JWL):  
.024" ~ .126" (0.6mm ~ 3.2mm)

JWL



JWLW



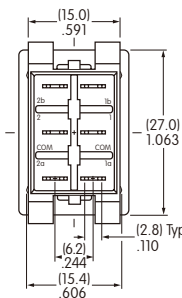
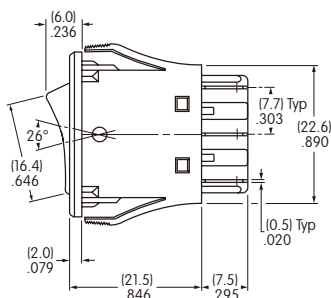
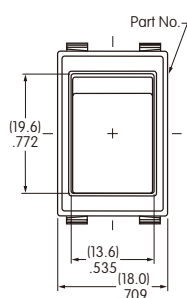
## High Inrush 10 & 16 Amp Rockers

## Series JW

### TYPICAL SWITCH DIMENSIONS FOR JWM & JMW

#### Single & Double Pole

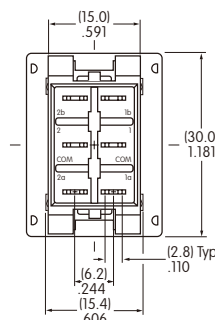
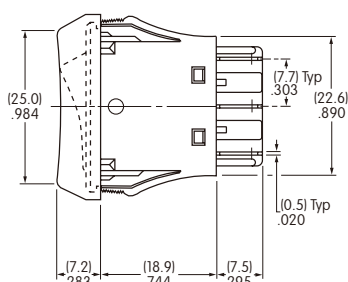
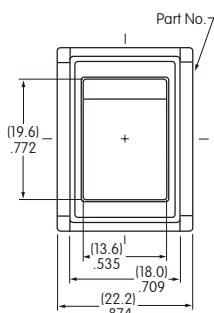
#### No Barrier • 10 Amp



JWM11RC1A

#### Single & Double Pole

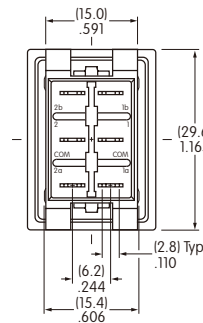
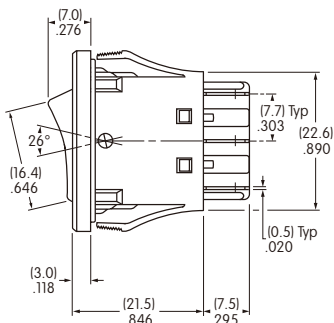
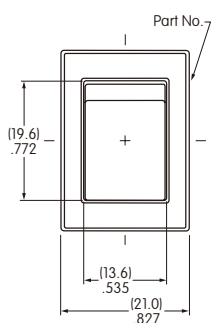
#### With Barrier • 10 Amp



JWM11BCA-H

#### Single & Double Pole

#### Panel Seal • No Barrier • 10 Amp



JWMW22RCA

Single pole double throw models do not have terminals 2a, 2, & 2b; single throw models do not have 1a & 2a.

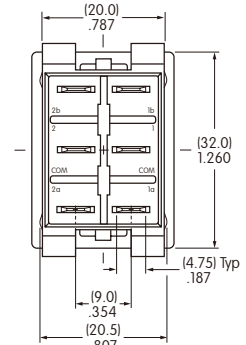
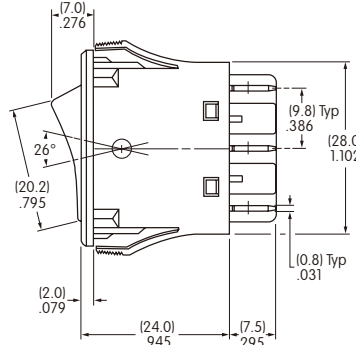
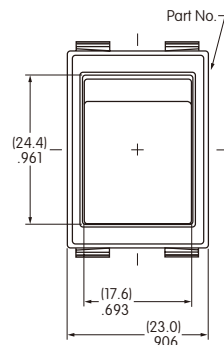
# Series JW

## High Inrush 10 & 16 Amp Rockers

### TYPICAL SWITCH DIMENSIONS FOR JWL & JWLW

#### No Barrier • 16 Amp

#### Single & Double Pole

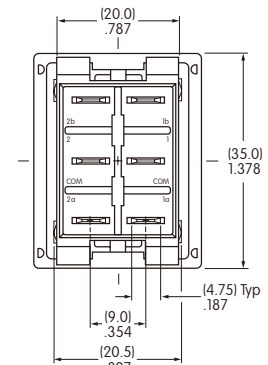
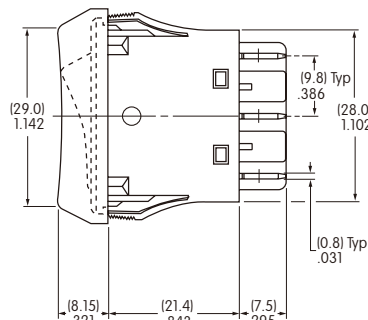
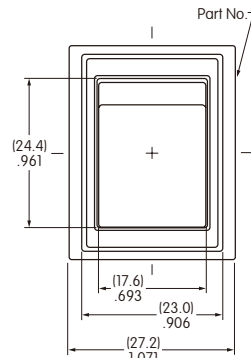


**JWL21RC2A**

Single pole double throw models do not have terminals 2a, 2, & 2b; single throw models do not have 1a & 2a.

#### With Barrier • 16 Amp

#### Single & Double Pole

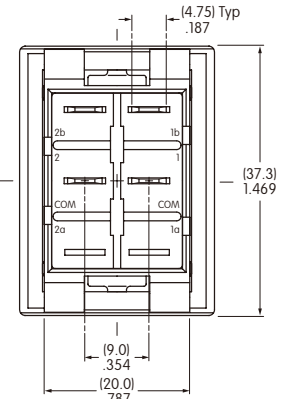
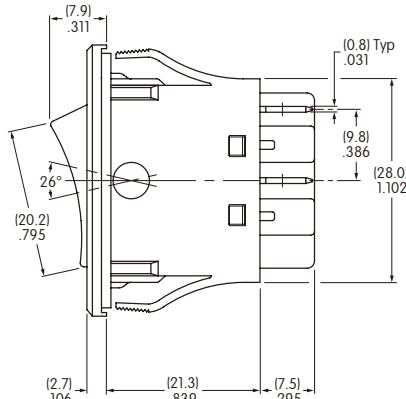
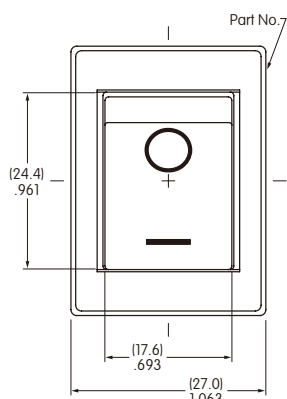


**JWL11BCA-H**

Single pole double throw models do not have terminals 2a, 2, & 2b; single throw models do not have 1a & 2a.

#### Panel Seal • 16 Amp • Inscription

#### Double Pole Single Throw



**JWLW21RA1A**

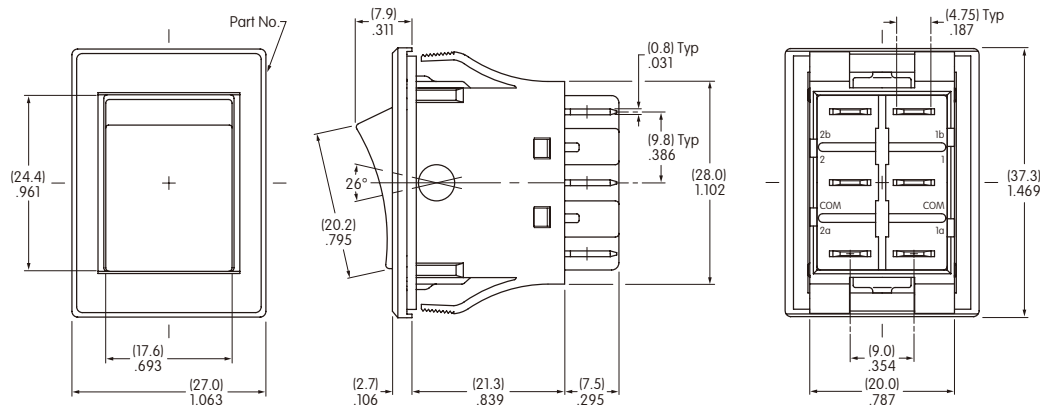
## High Inrush 10 & 16 Amp Rockers

## Series JW

### TYPICAL SWITCH DIMENSIONS FOR JWLW

#### Double Pole Double Throw

#### Panel Seal • 16 Amp • No Inscription



JWLW22RAA

### OPTIONAL DUST COVER

#### AT4126

#### Dust Cover for JWL Rocker

When installed, the Dust Cover protects the switch from an environment containing small particles and dust. The switch is operable with the Dust Cover in place.

#### Materials:

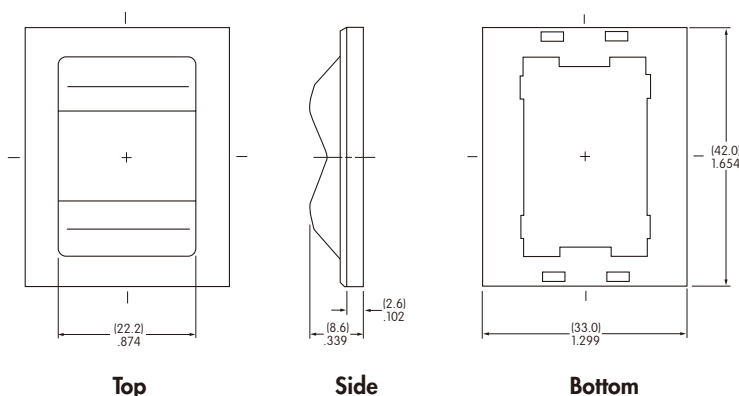
Lid: Clear Polyvinyl Chloride  
Base: Black Polyamide

#### Recommended Temperature Range:

-10° ~ +70°C (+14°F ~ +158°F)  
Loses pliability below 0°C (+32°F)

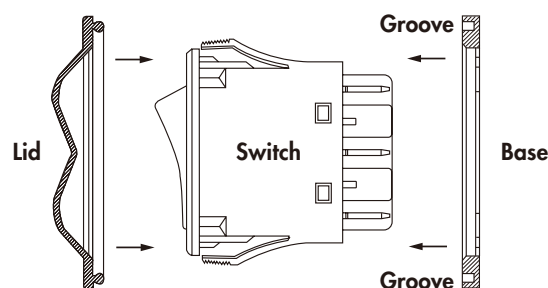
#### Recommended Panel Thickness:

.031" ~ .134" (0.8mm ~ 3.4mm)



#### Assembly Instructions:

1. Insert bottom of switch through the **base** until the tabs lock into place.
2. Snap the switch into the panel.
3. Seat the **lid** into the **grooves** of the **base**.



#### Notes

1. The dust cover is not for use with JWLW.
2. The dust cover cannot be used with the barrier option.



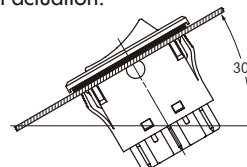
## Series JW

## High Inrush 10 & 16 Amp Rockers

### PRECAUTIONS FOR HANDLING & STORAGE FOR JWMW/LW (PANEL SEAL TYPES)

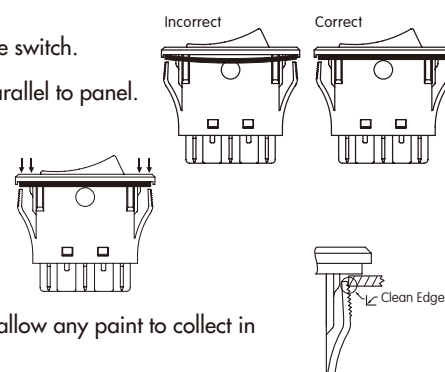
#### Operating Environment

- Do not install switch where heavy dust collection occurs. Dust build-up under rocker may affect switch actuation.
- Do not actuate switch if submerged in water or oil.
- Installation is not recommended on horizontal surface in an environment where frequent splashing of water may occur. In such an environment, a minimum 30° angle installation is advisable. If there is a possibility of freezing, install vertically so no moisture will be retained within switch housing.



#### Panel Mounting

- Before snapping a switch into the panel, align the gasket evenly under bezel of the switch.
- When mounting into a panel, apply equal pressure to sides of bezel and insert parallel to panel.
- After mounting a switch, be sure there are no gaps between switch and panel. Lightly push into panel.
- After installing into panel, do not apply excessive force.
- After panel installation and wiring is completed, do not apply force horizontally or vertically from behind panel.
- Behind the panel, cut area should be squared. If front of panel is painted, do not allow any paint to collect in corners of cutout to prevent level mounting.
- Avoid reinstalling a switch once it has been mounted in a panel. This may cause deterioration of panel sealability.



## Series JWS

## Internationally Approved Rockers

# General Specifications

### Electrical Capacity (Resistive Load)

**Power Level:** 10A @ 125/250V AC  
6A @ 125/250V AC (UL/CSA)  
5A (3A) @ 125/250V AC (VDE)

### Other Ratings

**Contact Resistance:** 10 milliohms maximum  
**Insulation Resistance:** 500 megohms minimum @ 500V DC  
**Dielectric Strength:** 2,000V AC minimum between contacts for 1 minute minimum;  
4,000V AC minimum between contacts & case for 1 minute minimum  
**Mechanical Life:** 30,000 operations minimum  
**Electrical Life:** 10,000 operations minimum  
**Nominal Operating Force:** Single Pole 3.92N & Double Pole 5.39N  
**Angle of Throw:** 30°

### Materials & Finishes

**Rocker:** Polyamide (UL94V-0)  
**Housing/Case:** Polyamide (UL94V-0)  
**Movable Contactor:** Copper with silver plating  
**Movable Contacts:** Silver alloy  
**Stationary Contacts:** Silver alloy  
**End Terminals:** Brass with silver plating  
**Common Terminals:** Copper with silver plating  
**Lamp Terminals:** Phosphor bronze with tin plating (illuminated models only)

### Environmental Data

**Operating Temp Range:** -25°C through +70°C (-13°F through +158°F) for nonilluminated models;  
-25°C through +50°C (-13°F through +122°F) for illuminated models  
**Humidity:** 90 ~ 95% humidity for 96 hours @ 40°C (104°F)  
**Vibration:** 10 ~ 55Hz with peak-to-peak amplitude of 1.5mm traversing the frequency range & returning in 15 minutes; 3 right angled directions for 2 hours  
**Shock:** 50G (490m/s<sup>2</sup>) acceleration (tested in 6 right angled directions, with 5 shocks in each direction)  
**Sealing:** Dust resistant inner seal

### Installation

**Soldering:** Manual Soldering: See Profile A in Supplement section.  
**Cleaning:** These devices are not process sealed. Hand cleaning locally using alcohol based solution.

### Standards & Certifications

**Flammability Standards:** UL94V-0 for rocker & housing/case  
**UL:** File No. E44145  
All JWS models recognized at 6A @ 125/250V AC  
**CSA:** File No. 023535\_0\_000  
All JWS models certified at 6A @ 125/250V AC  
**VDE:** License No. 119153  
All JWS models approved at 5A (3A) @ 125/250V AC

## Internationally Approved Rockers

## Series JWS

# Distinctive Characteristics

Rocker caps and housing available in a variety of colors.

Protective barrier available to prevent accidental actuation.

Constructed for dust resistance with interior cover of polyamide between actuator and contact area.

Easy, crisp actuation.

Small size well suited for telecommunication, measuring, automation, and consumer applications.

Terminals are molded in to lock out flux, dust, and other contaminants.

Outer case of heat resistant resin meets UL94V-0 flammability standard.



Actual Size

