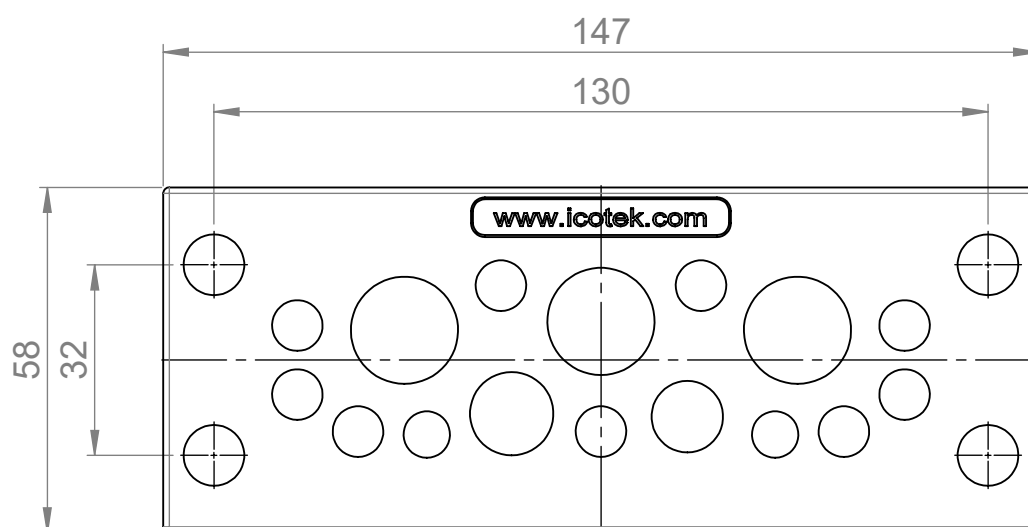


mit Edelstahl-Gewindebuchsen / with Stainless Steel threaded bushings  
 Anzugsdrehmoment / Torque: max. 1,5 Nm

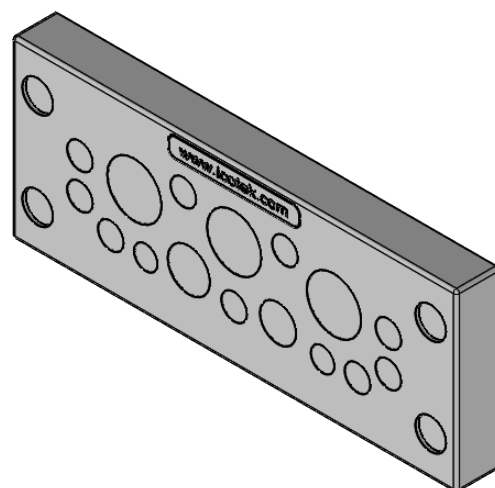
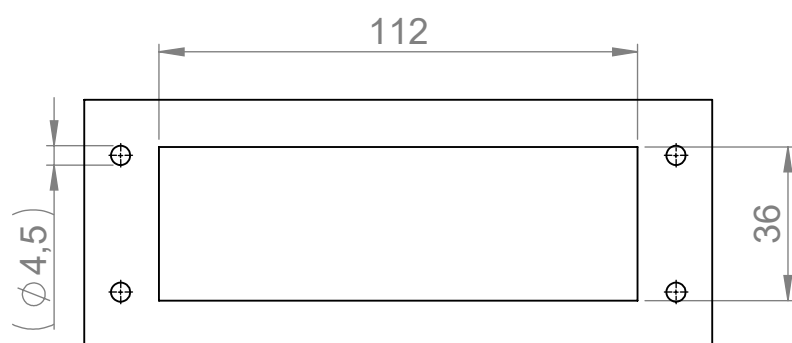


#### Anzahl Leitungen mit Durchmesser

#### Quantity of cables:

- 2 x Ø 3,2mm - 6,3mm
- 9 x Ø 4,0mm - 7,5mm
- 1 x Ø 5,5mm - 10,5mm
- 1 x Ø 8,0mm - 12,5mm
- 3 x Ø 12,0mm - 16,2mm

#### Ausbruch / Cut-out dimensions: 36x112mm



## KEL-DPU 24

Heavy-duty cable entry plates with high strain relief

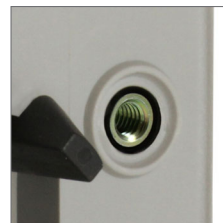


IP66

IP68



Also available in black.



Also available with threaded bushings.



Tool-free assembly possible due to snap-in function

### Product description

2.1

KEL-DPU entry plates are designed to route and seal cables without connectors (from 3.2 mm to 20.5 mm in diameter) in limited space with IP66 / IP68\*\* / up to UL type 4X ratings.

The KEL-DPU is particularly characterised by its solid robust frame and the increased strain relief of the routed cables.

The KEL-DPU 24 matches exactly the cut-out dimensions of 24-pin standard industrial connectors. For optional screw assembly just pierce the membranes on the integrated screw holes with the screw itself.

The assembly of the KEL-DPU with cables or pneumatic hoses can be done quick and easy. Simply make a small hole in the thin membrane and push the cables through.

ST-B Plugs can be used for sealing pierced membranes if cables have been removed.



Description	Type	Order No.	Number of cables	PU
	KEL-DPU 24 13	■ 43940 ■ 50940	10x 3.2 - 6.3 mm 3x 16 - 20.5 mm	10
	KEL-DPU 24 14	■ 43944 ■ 50944	5x 3.2 - 6.3 mm 2x 4 - 7.5 mm 3x 5.5 - 10.5 mm 1x 8 - 12.5 mm 3x 12 - 16.2 mm	10
	KEL-DPU 24 16	■ 43936 ■ 50936	8x 3.2 - 5.5 mm 6x 5 - 8.5 mm 2x 9.5 - 14.5 mm	10
	KEL-DPU 24 16-1	■ 43932 ■ 50932	2x 3.2 - 6.3 mm 9x 4 - 7.5 mm 1x 5.5 - 10.5 mm 1x 8 - 12.5 mm 3x 12 - 16.2 mm	10
	KEL-DPU 24 17	■ 43934 ■ 50934	4x 3.2 - 6.3 mm 2x 4 - 7.5 mm 1x 5.5 - 10.5 mm 10x 8 - 12.5 mm	10

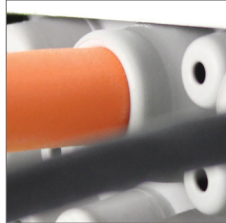
\* Only valid for grey product types | \*\* IP68 only when screw mounted

## KEL-DPU 24

Heavy-duty cable entry plates  
with high strain relief



Membrane on front



Conical shape on back provides additional sealing and strain relief



Resistant against industrial detergents (ECOLAB certified)



IP66

IP68

Description	Type	Order No.	Number of cables	PU
	KEL-DPU 24 20	■ 43938 ■ 50938	12× 3.2 - 5.5 mm 8× 5 - 10.5 mm	10
	KEL-DPU 24 21	■ 43930 ■ 50930	1× 3.2 - 6.3 mm 14× 4 - 7.5 mm 4× 5.5 - 10.5 mm 2× 8 - 12.5 mm	10
	KEL-DPU 24 32	■ 43942 ■ 50942	32× 3.2 - 6.3 mm	10

\* Only valid for grey product types | \*\* IP68 only when screw mounted

### Advantages & benefits

- Snap or screw mounting possible
- High strength & stability
- High strain relief
- Fast and easy assembly
- High cable density
- Dual cable sealing with IP66/IP68\*\*/up to UL type 4X
- Hygienic design - free of dirt-collecting recesses

2.1

### Specifications

Material	Frame: Polypropylene (PP)
Colour	Sealing plate: Elastomer ■ grey (similar RAL 7035) ■ black
Flame class	UL94-Vo, self-extinguishing
IP rating	IP66/IP67/IP68 (certified acc. to EN 60529)
UL type rating	UL type 12 (acc. to UL 50E) UL type 4X (acc. to UL 50E)
Temperature Properties	- 40°C to + 100°C (static)
Cut-out dimensions	Halogen-free, silicone-free
Plate depth	36 × 112 mm / page 220 - 221
For wall thickness (snap-in mounting)	14 mm 1.5 - 2 mm

### Accessories

ST-B Plugs	93
KEL-EMC-PF Cable collectors	149
FP Flanged plates	194 - 203