

**Model P120**  
**12mm Rotary Potentiometer**  
**Single/Dual Unit**  
**Conductive Plastic Element**  
**100,000 Cycle Life**  
**Insulated shaft**  
**RoHS Compliant**



### MODEL STYLES

Side Adjust, PCB pins, Single unit	P120K
Top Adjust, PCB pins, Single unit	P120PK
Top Adjust, PCB pins, Dual unit	P120KGP
Side Adjust, PCB pins, Dual unit	P120KGE

### ELECTRICAL<sup>1</sup>

Resistance Range, Ohms	1K- 1M
Standard Resistance Tolerance	± 20%
Residual Resistance	20 ohms max.
Input Voltage, maximum	50 Vac max.
Power rating, Watts	0.05w
Dielectric Strength	300Vac, 1 minute
Insulation Resistance, Minimum	100M ohms at 250Vdc
Sliding Noise	100mV max.
Gang Error ( Multi-ganged )	-40dB – 0dB, ±3dB
Actual Electrical Travel, Nominal	260°

### MECHANICAL

Total Mechanical Travel	300°± 10°
Static Stop Strength	50 oz-in
Rotational Torque	0.5 to 1.25 oz-in

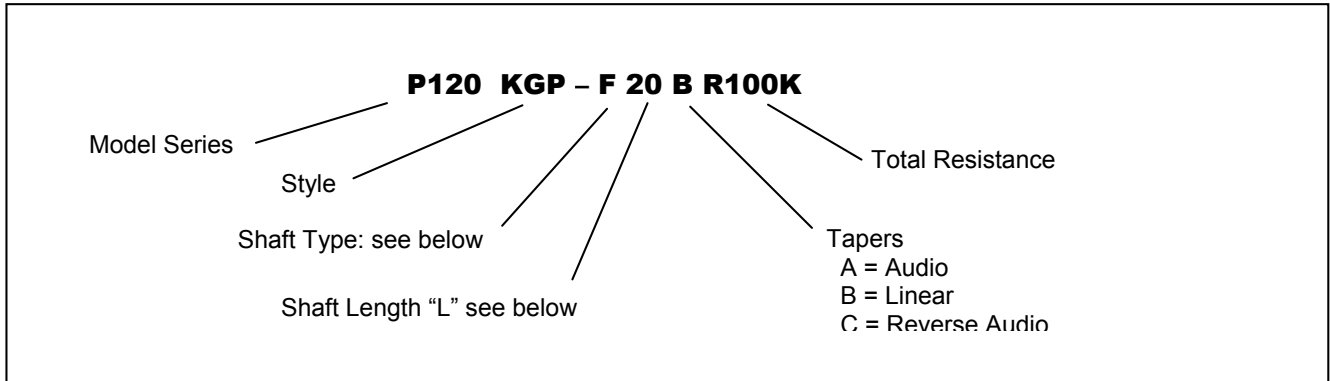
### ENVIRONMENTAL

Operating Temperature Range	-40°C to +85°C
Rotational Life	100,000 cycles

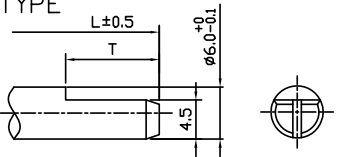
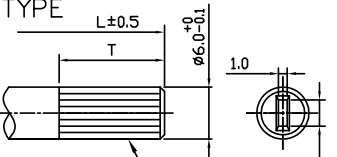
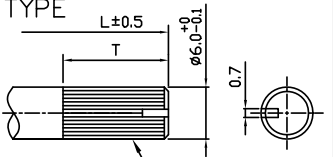
<sup>1</sup> Specifications subject to change without notice.

# Model P120

## ORDERING INFORMATION<sup>2</sup>



## Shaft Types

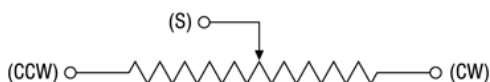
	<div>F-TYPE</div> 								<div>Y-TYPE</div> 								<div>T-TYPE</div> 								
TOP ADJUST	L	15	17	20	25	30	35	40	L	15	20	25	30	35	40		L	15	20	25	30	35			
	T	5	7	7	12	12	12	12	T	5	8	12	12	12	12		T	5	7	7	12	12			
SIDE ADJUST	L	10	15	20	25	30			L	10	15	20	25	30			L	10	15	20	25	30			
	T	5	8	12	12	12			T	5	8	12	12	12			T	5	7	7	12	12			

## STANDARD RESISTANCE VALUES, OHMS

1K    2K    5K    10K    20K    50K    100K    200K    500K    1MEG

## CIRCUIT DIAGRAM

Unless otherwise specified

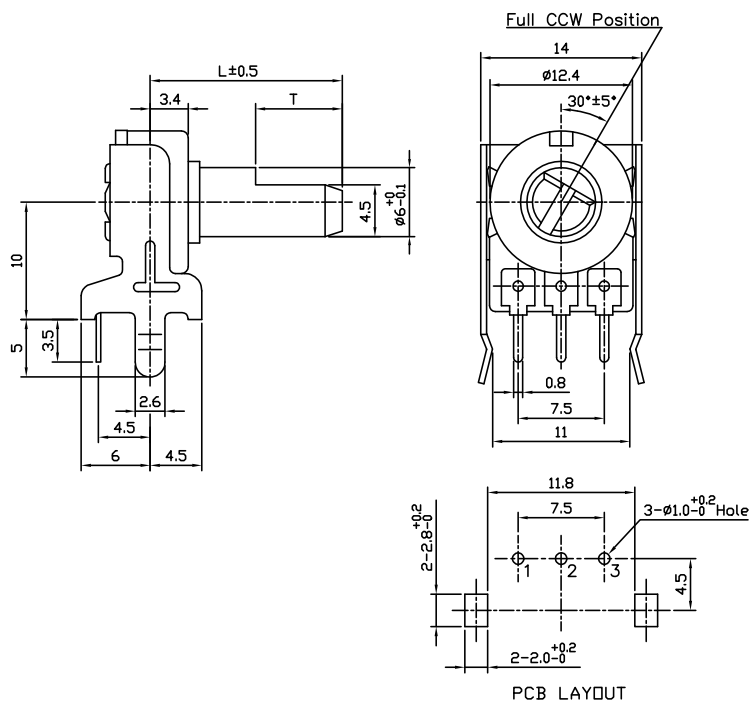


<sup>2</sup> Contact our customer service for custom designs and features.

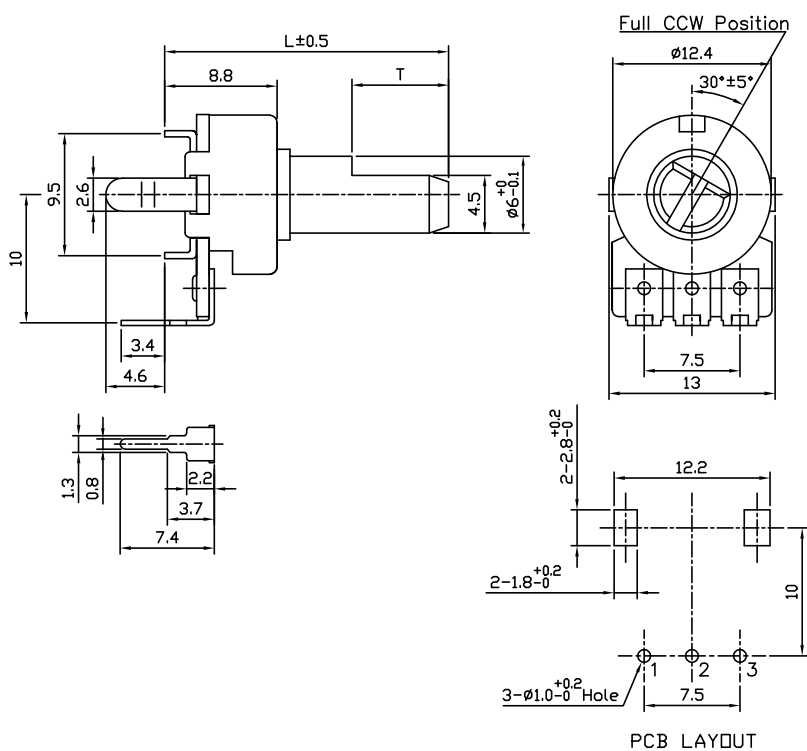
# Model P120

## OUTLINE DRAWING

### Model P120K (Side Adjust, PCB pins, Single unit)

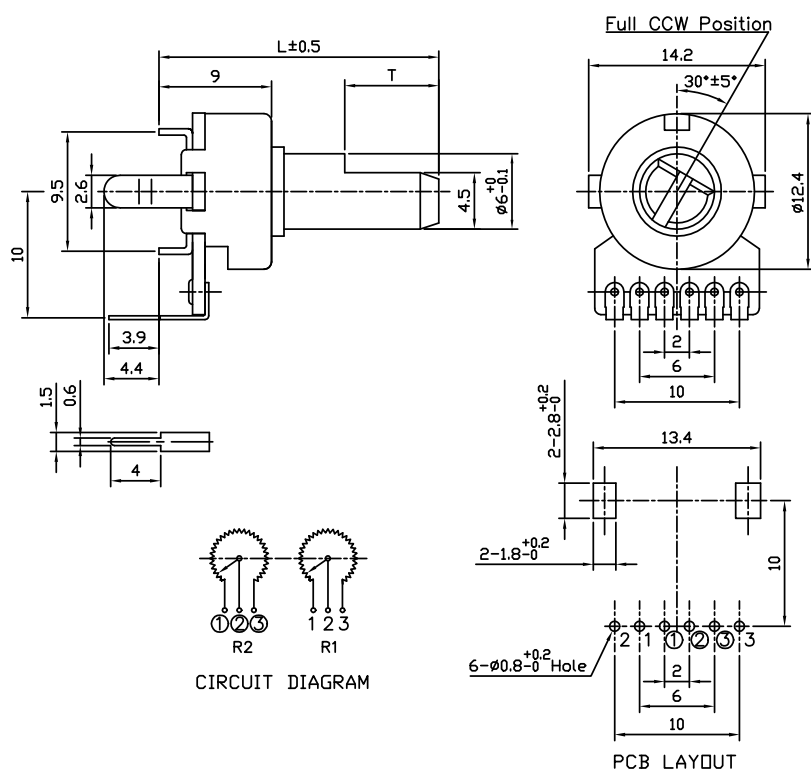


### Model P120PK (Top Adjust, PCB pins, Single unit)



## Model P120

Model P120KGP (Top Adjust, PCB pins, Dual unit)



Model P120KGE (Side Adjust, PCB pins, Dual unit)

