

Water Proof Circular Connectors

R04 series / R28 series

- R04 series connectors are built compact and the tight waterproofing mechanism allows the model to be at a depth of 20 meters . This model is ideal for application where units are exposed to extreme weather or high humidity either inside or outside.

Also available in a hermetically sealed receptacle.

R28 series based on R04 series feature high density and miniaturization.

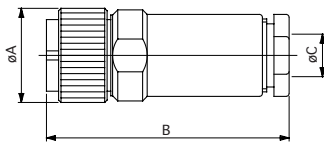
Specifications

Series	R04	R28
Connections	Screw Coupling	
Termination	Solder	
Temperature and Humidity	-25°C to +85°C 85% Max.	
Number of Pins	2, 3, 5, 6, 8, 12	8, 12
Shell Material / Finish	Brass and Zinc Alloy / Nickel	
Contact Material / Finish	Copper Alloy / Gold over Nickel	
Insulation Material	PBT Resin (UL 94 V-0)	
Water Proof (connected state)	200kPa (2kgf/cm ²)	
Hermetic Seal (Hermetically sealed recep. only)	Helium leak rate 1 ATM. 1x10 ⁻⁹ cc/sec max.	-----

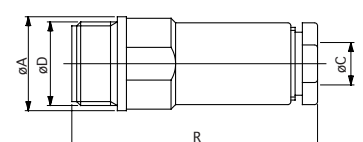
* See next page as for Electrical Specifications.



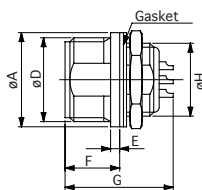
Plug
R04-P8M



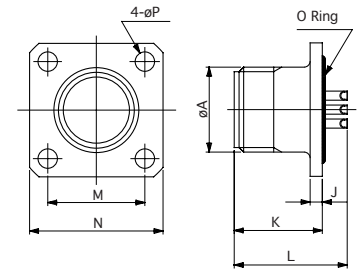
Jack
R04-J8F6.3



Bulkhead Mount Receptacle
R04-R8F



Hermetically Sealed Recep.
R04-R2MHB
(Only R04series)



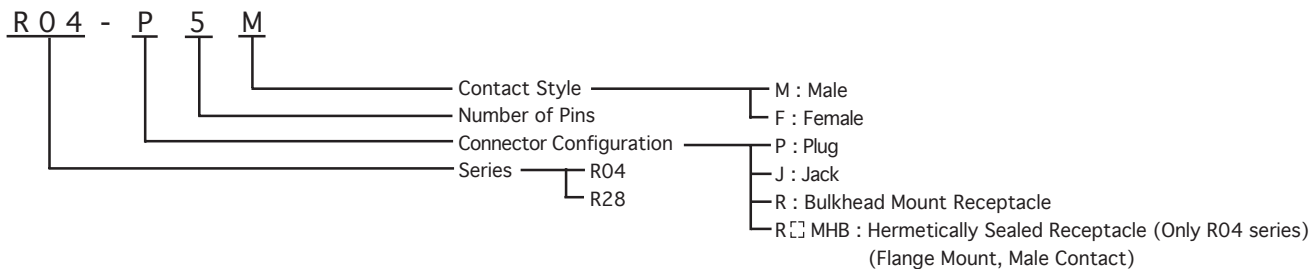
Configuration

Series	Insert size	No. of Pins	Dimensions (mm)														
			A	B	C	D	E	F	G	H	J	K	L	M	N	P	R
R04	6	2, 3, 5	12.0	38.0	4.8	10.5 P=0.75	1.5	9.0	17.8	9.0 P=0.5	2.0	14.5	18.6	14.0	20.0	3.2	38.0
	9	6, 8	15.5	40.0	6.3, 6.8, 7.3	M14 P=1	1.5	9.0	17.8	12.0 P=0.8	2.0	14.5	18.6	16.0	22.0	3.2	40.5
	12	12	20.0	43.3	6.3, 8.5	M18 P=1	1.5	9.0	17.8	M16 P=1	3.0	14.5	18.6	20.0	26.0	3.2	41.8
R28	6	8	12.0	38.0	4.8	10.5 P=0.75	1.5	9.0	17.8	9.0 P=0.5	---	---	---	---	---	---	---
	9	12	15.5	40.0	6.3, 6.8, 7.3	M14 P=1	1.5	9.0	17.8	12.0 P=0.8	---	---	---	---	---	---	---

Water Proof Circular Connectors

R04 series / R28 series

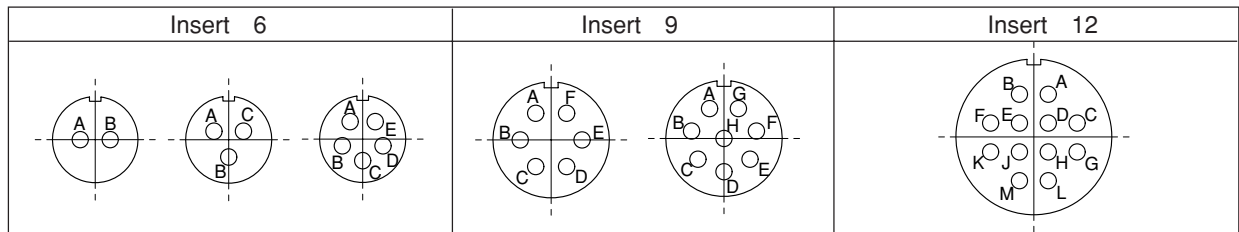
Part Numbering System



Electrical Specifications

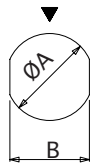
Series	R04						R28	
	6			9		12	6	9
Insert Size	6			9		12	6	9
Number of Contacts	2	3	5	6	8	12	8	12
Withstanding Voltage (V RMS)	900	900	500	900	700	900	300	300
Voltage Rating (V RMS)	300	300	150	300	200	300	100	100
Current Rating (A)	2							
Applicable Wire Size	AWG#24 (0.2mm ² Max.)						AWG#26 (0.1mm ² Max.)	
Contact Resistance	8mΩ Max.						15mΩ Max.	
Insulation Resistance	DC500V 1000MΩ min.						DC100V 1000MΩ min.	

Insert Arrangement



* Drawings above are ones viewed from the rear side of pin insulators. (pin contacts)

Mounting Hole Dimensions

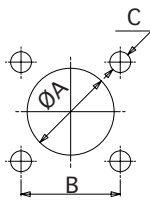


Style 1

Bulkhead Mount Receptacle

Insert Size	Style	φA	B
6	1	9.2	8.4
9		12.2	11.2
12		16.2	14.7

* R28 is not available in insert size 12.



Style 2

Hermetically Sealed Receptacle (Flange Mount, Only R04 series)

Insert Size	Style	φA	B	C
6	2	9.6	14.0	M3
9		12.4	16.0	M3
12		16.8	20.0	M3