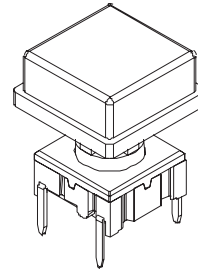
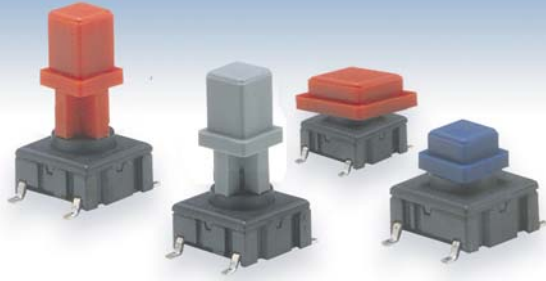


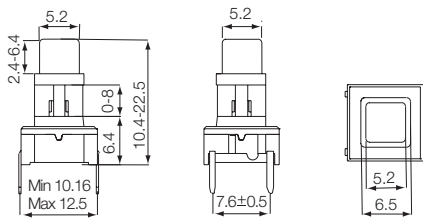
varimec double variability



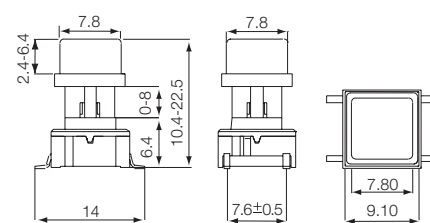
Technical Data:

- through-hole or SMD
- 50mA/24VDC
- single pole/momentary
- 10.000.000 operations life time
- IP67 sealing
- temperature range switch:
low temp: -40/+115°C
high temp: -40/+160°C
- temperature range cap:
40/+160°C

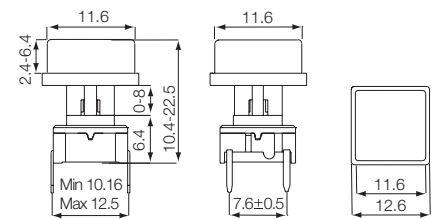
Square 5.2



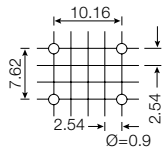
Square 7.8



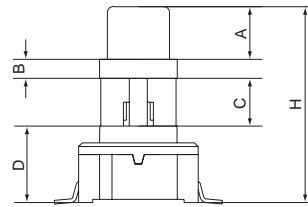
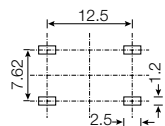
Square 11.6



PCB Layout Through-hole



PCB Layout SMD



The Concept

- H** = Overall heights from 10.4-22.5
- A** = Variable height from 2.4 to 6.4
A cannot exceed **H** - 8.0
- B** = Fixed recess 1.6
- D** = Fixed switch 6.4
- C** = Variable from 0-8.1
- C = H - A - B - D**

All measurements in mm

HOW TO ORDER:



Switch	Shape and Size	Colour Codes	Overall Height	Height above recess	Tape*
			H	A	
3ETL	B 5.2 Square	60 Blue	A 10.4	A 2.4	R
3ESH	F 7.8 Square	63 Grey	B 11.0	B 3.0	
3ETH	L 11.6 Square	64 Yellow	C 12.0	C 3.5	
		68 Red	D 12.5	D 4.0	
		69 Black	E 13.0	E 4.5	
			F 14.0	F 5.0	
			G 15.0	G 5.6	
			H 16.0	H 6.4	
			J 19.0		
			K 22.5		

Cap alone:

Instead of part no. for switch please use 3E- and then same as above

Examples Switch and Cap:

3ESHB60AA = Switch 3ESH, 7.8 Square Cap, Blue, Overall Height 10.4, Height above recess 2.4, (Height under recess 0).

Example Cap Alone:

3E-E63FF = Cap, 7.8 Square, Grey, Overall Height with switch 14.0, Height above recess 5.0, (Height under recess 1.0).

Min. order is 2.000 pcs. per shape, size and heights for parts mentioned above.

For heights not mentioned in the list a start-up fee will apply.

*Only overall height up to 12.5 mm can be supplied on tape.