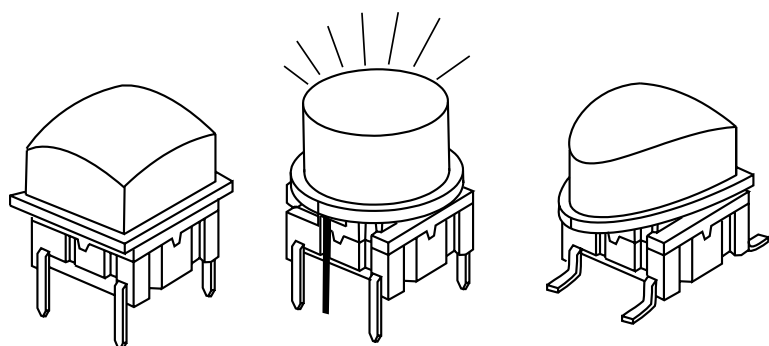


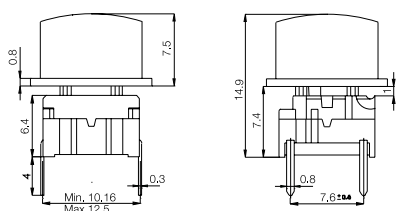
multimec® 3F+1T/1U/1V



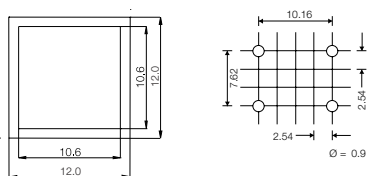
Technical Data:

- through-hole or SMD
- 50mA/24VDC
- single pole/momentary
- 10.000.000 operations life time
- IP67 sealing
- temperature range:
low temp: -40/+115°C
high temp: -40/+160°C

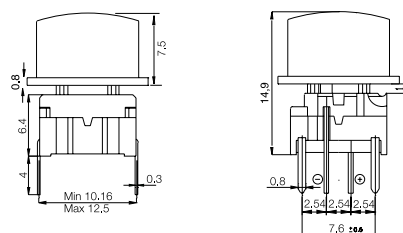
Dimensions (through-hole)



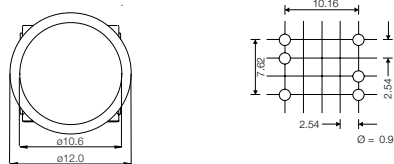
PCB layout



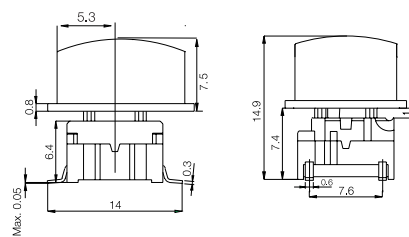
Dimensions (w/LED)



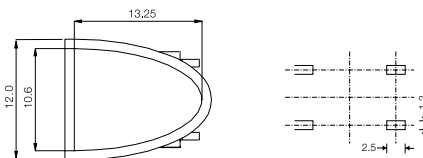
PCB layout (solder side)



Dimensions (SMD)



PCB layout



HOW TO ORDER

3 F	<input type="checkbox"/>	<input type="checkbox"/>	+	<input type="checkbox"/>	<input type="checkbox"/>
Switch	Mounting	L 6 low temp. H 9 high temp.		Cap	00 blue 03 grey 08 red 09 black custom colours on request
	T through-hole S surface mount			1T 1U 1V	

Standard versions:

3FTL6
3FTH9
3FSH9

3 F	T	<input type="checkbox"/>	<input type="checkbox"/>	+	<input type="checkbox"/>	1 6
Switch	Mounting	L 6 low temp. H 9 high temp.	LED		Cap	transparent white
	T through-hole		22 green 44 yellow 88 red		1T 1U 1V	

Standard versions:

3FTL622
3FTL644
3FTL688

Combinations of high temperature switches with LED's will be limited by the temperature capability of the LED.

Ordering example: 3FTL640 + 1V16