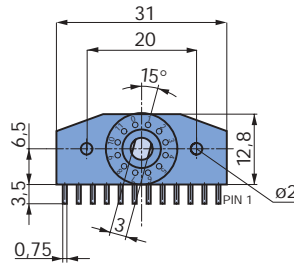
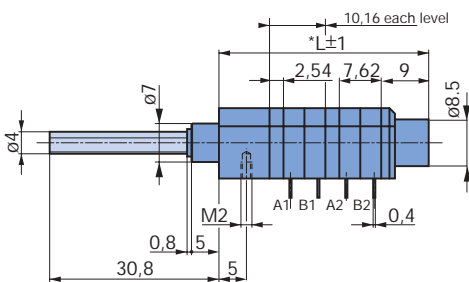


Rotary Switches Type 08

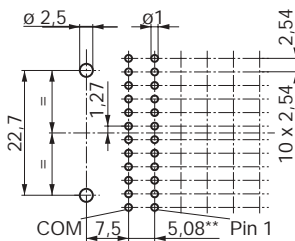
- 12 position switch
- life expectancy > 25 000 switching cycles
- steel spindle-shaft and metal bush for rugged applications
- for PCB mounting
- temperature range (-40 °C to +85 °C)
- gold 3µm contact standard



With pins for PCB mounting



Contact arrangement



Ax = common contact half of wafer x
Bx = discrete contact half of wafer x

*L = 1 wafer 28 mm
2 wafers 38,16 mm
3 wafers 48,32 mm
4 wafers 58,48 mm
per wafer more + 10,16 mm

** All further steps are in 5,08mm

Possible modifications on request

- special type of shaft (length, form)
- special torque
- special end stop
- hollow shaft/inner shaft

Stop Screws M 1,2 (package of 10 pieces)	4224-11
Stop Screws M 1,2 (package of 100 pieces)	4224-10
Fixing screws M 2 x 6 (package of 10 pieces)	4224-01

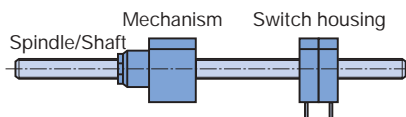
Indexing angle 30°

Contact arrangement from spindle/shaft side:		Function (Pole x Position)	Number of wafers	shorting gold 3 µm	non-shorting gold 3 µm
common contact half of wafer	discrete contact half of wafer				
		1 x 12 o.A.	1	08-1103	08-1104
		2 x 12 o.A.	2	08-2103	08-2104
		3 x 12 o.A.	3	08-3103	08-3104
		4 x 12 o.A.	4	08-4103	08-4104
		1 x 12	1	08-1113	08-1114
		2 x 12	2	08-2113	08-2114
		3 x 12	3	08-3113	08-3114
		4 x 12	4	08-4113	08-4111
		2 x 6	1	08-1263	08-1264
		4 x 6	2	08-2263	08-2264
		6 x 6	3	08-3263	08-3264
		8 x 6	4	08-4263	08-4264
		3 x 4	1	08-1343	08-1344
		6 x 4	2	08-2343	08-2344
		9 x 4	3	08-3343	08-3344
		12 x 4	4	08-4343	08-4344
		4 x 3	1	08-1433	08-1434
		8 x 3	2	08-2433	08-2434
		12 x 3	3	08-3433	08-3434
		16 x 3	4	08-4433	08-4434

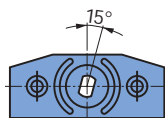
Contact arrangement from the spindle side u. = non-shorting, o.A. = without end stop, can **not** be adjusted subsequently!

packing unit : 20 pieces

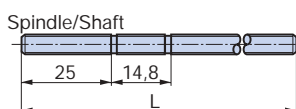
Switch in kit form



View of wafer from front shaft/spindle side



Pin 12 Pin 1



Switch housing, shorting

Functions (Pole x Position)	Contact material gold 3 µm
1 x 12	4217-10
2 x 6	4217-11
3 x 4	4217-13
4 x 3	4217-12

packing unit : 20 pieces

Switch housing, non-shorting

Functions (Pole x Position) gold 3 µm	Contact material
1 x 12 u.	4218-10
2 x 6 u.	4218-11
3 x 4 u.n	4218-13
4 x 3 u.	4218-12

u. = non-shorting

packing unit : 20 pieces

Switch mechanism

Recommendable for	Position	Torque	Order number
Total ≤ 6 Pole	12	6 Ncm	4214-10
Total > 6 Pole	12	9 Ncm	4214-12

packing unit : 20 pieces

Spindle-Shaft incl. assembling material

Length	for max.	Order number
75 mm	3 Switch housing	4211-05
100 mm	5 Switch housing	4211-10
125 mm	7 Switch housing	4211-15
150 mm	9 Switch housing	4211-20

packing unit : 20 pieces

1 mm = 0.04 inch, 1 inch = 25.4 mm

Items available from stock!