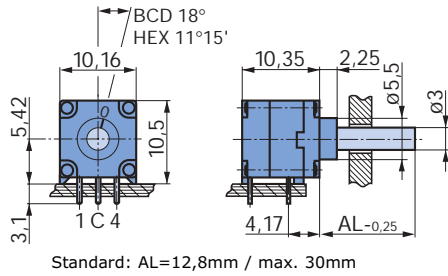
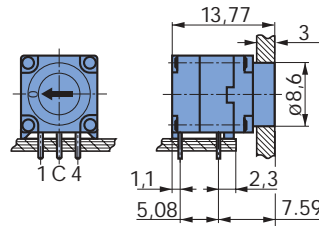


Rotary Switches Type 07R

Horizontal

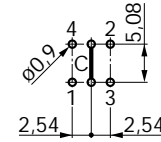


Front-panel operation

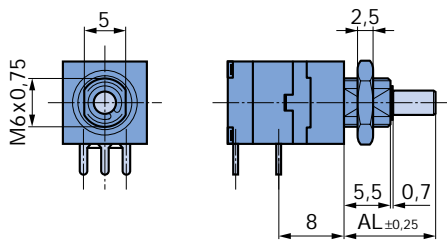


Drilling diagram

View from component side

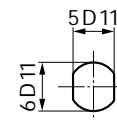


Horizontal for panel mounting

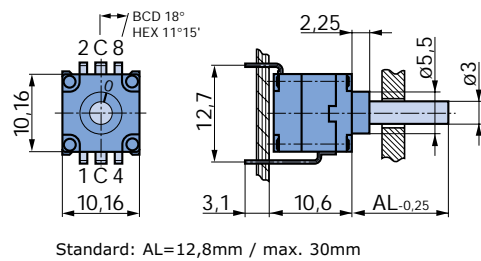


Panel mounting waterproof
O-Ring and nut supplied

Front-panel cut out

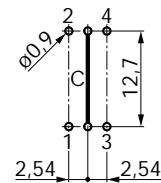


Vertical

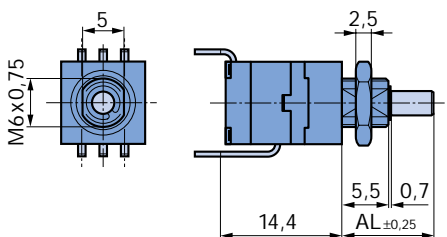


Drilling diagram

View from component side

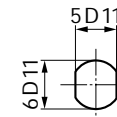


Vertical for panel mounting



Panel mounting waterproof
O-Ring and nut supplied

Front-panel cut out



Description

Rotary switch in horizontal or vertical version.

Operation by screwdriver or stainless steel shaft (knob).

Precise position indexing and long life performance.

Sealed and washable.

Solid tinned terminals
(0,4 x 0,7 mm)

Terminations for direct mounting on circuit boards 2.54 mm (0.1") pitch

Indexing positions, end stop 4 positions with indexing angle 36°, additional 0 (inactive) position available on request

Leadfree reflow version available on request

Rotary Switches Type 07R

Technical information

Mechanical data

Indexing mechanism
36°

Switching torque
2,2 Ncm ± 25%
(standard)
3,5 Ncm ± 25%
(on request)

Admissible moment of the end-stop
45 Ncm

Panel mounting
admissible torque max. 100 Ncm

Temperature range
Storage temperature:
– 40 °C to + 85 °C
Operating temperature:
– 25 °C to + 85 °C

Life
> 40000 switching cycles
(> 320000 switching positions)

Material data

Case
high quality temperature-resistant
thermoplastic

Spindle-shaft
stainless steel

Insulation
high quality thermoplastic

Contact parts
alloy copper > 3 µm gold plated

Soldering data

Handsoldering
Plastic wafer ≤ 5 s/≤ 260 °C

Machine soldering
Wave ≤ 5 s/≤ 260 °C
Reflow (THR) ≤ 5 s/≤ 260 °C
(on request)
Lead free reflow (on request)

Electrical data

Application data
Voltage < 42 V

Switching capacity
5 VA

Switching voltage (resistive load)
≤ 42 V

Switching current (resistive load)
≤ 0,2 A

Test voltage at 50 Hz/1 min
≥ 500 V ~

Insulation resistance at 500 V
= 1 min
≥ 10¹¹ Ω

Contact resistance

< 50 mΩ in new condition

Various

Assembled in clean room
Class 100 000, US Federal Standard

Sealed and washable

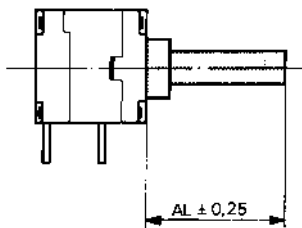
IP protection degree
up to IP 68 (5bar) sealable

Special Options Type 07R

Ordering option

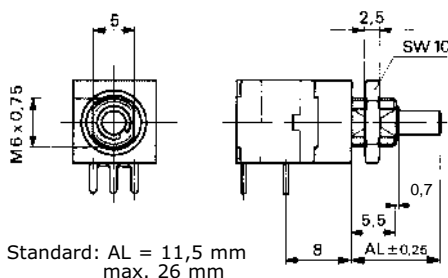
To order a special option please use the order form on page 124.
Please specify your requirements and fax it to your local contact or to Elma.

Special shaft length



Please state length AL (see diagram) measured from mounting face when ordering (max. AL = 30 mm)
Specify spindle length on page 124.

Panel mounting / waterproof version M6 x 0.75



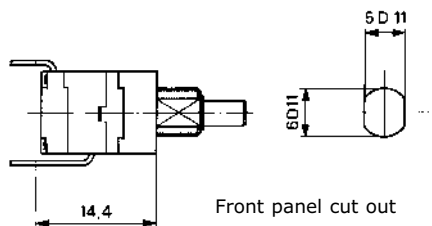
This standard option made of die cast allows central mounting plus shaft and panel seal. Shaft diameter is 3 mm.
Max. admissible tightening torque for nuts 100 Ncm

Order examples

ZB
ZB/WD (for waterproof option)

Waterproof up to 2 bar (IP 68)

Please complete order form on page 124.



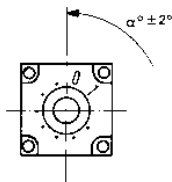
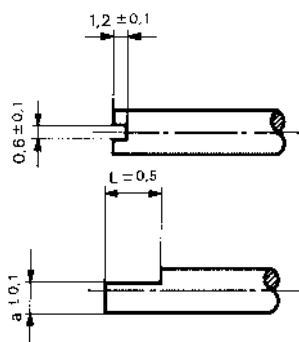
Panel mounting waterproof
O-Ring and nut supplied

Adjustable stops

Adjustable stops can be set during assembly only.
Please complete order form on page 124.

Special types of shaft

Specially machined shafts are available. For orders a sketch or drawing is required.
Please specify dimensions on page 124.



Switch on pos. 1

Shortened bushing

Please state dimension B
Dimension B = min. 3,5 mm / max. 5,5 mm
Specify dimensions on page 124.

