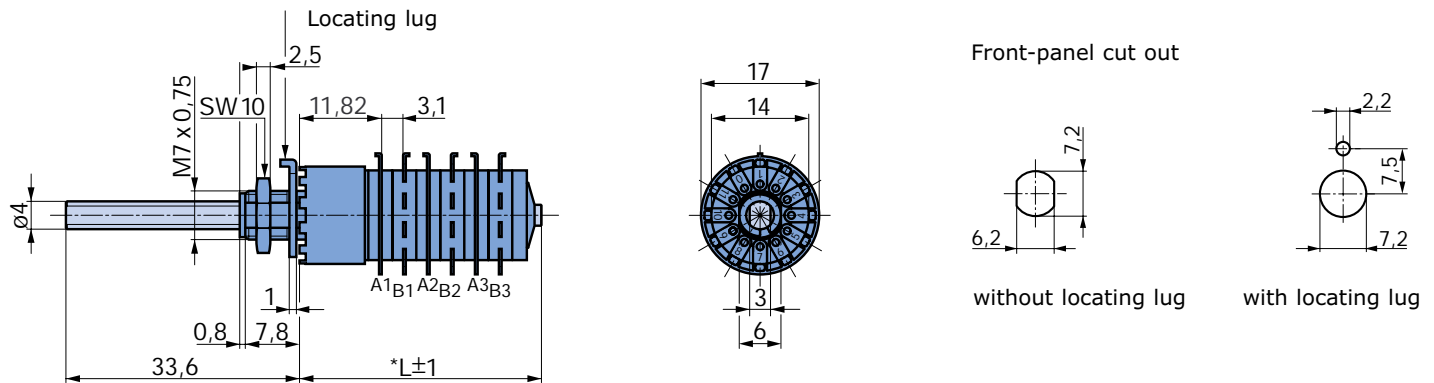


Rotary Switches Type 06

With solder eyelets



SW = Key spanner

Ax = Common contact half of wafer x
Bx = Discrete contact half of wafer x

*L = 1 wafer
2 wafers
3 wafers
4 wafers
one additional wafer

21 mm
28 mm
35 mm
42 mm
+7mm

Description

Rotary switch with bridge contact principle

Overall dimensions
ø 17 mm

Threaded bushing
M 7 x 0,75

Shaft
ø 4 mm, flat on two sides

Indexing angle
30° = 12 switching positions
with or without end-stop.

The adjustable stop screws can be set on any position between 2 and the maximum. Stop screws have to be ordered separately.

Number of poles per wafer
1, 2, 3 or 4 poles

Switching mode
Shorting or non-shorting

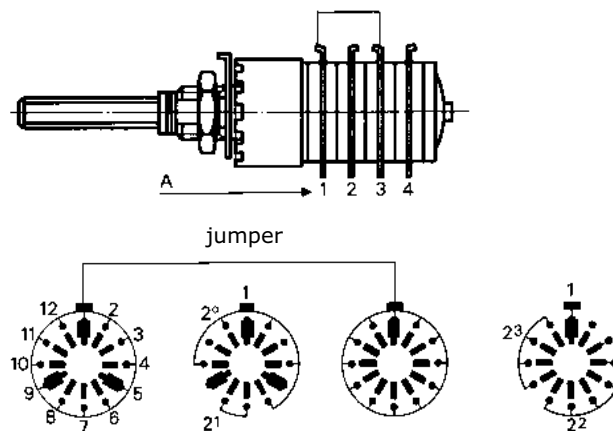
Contact material
gold flash; Gold plated 3 µm

Terminals
Solder eyelets

Rotary Switches Type 06 with BC-code

BC-Code

	2 ³	2 ²	2 ¹	2 ⁰
1				
2				●
3			●	
4			●	●
5		●		
6		●		●
7		●	●	
8		●	●	●
9	●			
10	●			●
11	●		●	
12	●		●	●



12 positions; the coding will be made according to the opposite layout.
Limiting detent to 10 (BCD) with a stop screw M 1.2 x 2.5 can easily be done.

1 mm = 0.04 inch

1 inch = 25.4 mm

Rotary Switches Type 06

Technical information

Mechanical data

Indexing mechanism

30° = 12 positions shorting
shorting or non-shorting

Switching torque with 1 wafer, 1 pole

6 Ncm ± 25%
≤ 6 wipers

9 Ncm ± 25%
> 6 wipers

on request:

3 Ncm ± 25%

Max. admissible tightening torque for nuts

max. 200 Ncm

Vibration resistance

10–2000 Hz/10 g

Mechanical life

> 25000 switching cycles

Temperature range

– 40 °C to + 85 °C

Material data

Housing

pressure cast, zinc plated and passivated

Shaft

stainless steel, flat on two sides

Insulation material

Wafer: Diallylphtalat (DAP)

Rotor: Polyacetal (POM)

Contact material

Stator (brass)

- gold flash
10 µm silver coated, gold flashed
approx. 0,2 µm
- 3µm gold plated
3 µm gold plating on 3 µm nickel
layer

Wiper (beryllium-copper)

- gold flash
silver-palladium plated 10 µm
- 3 µm gold plated

Soldering data

Handsoldering

Plastic wafer ≤ 5 s/≤ 260 °C

Electrical data

Application data

Voltage < 42 V

Current < 2 V

Switching capacity with resistive load

1 V/1,5 A AC/DC

24 V/0,3 A AC/DC

42 V/0,2 A AC/DC

Switching mode

shorting or non-shorting

Contact and lead resistance

< 10 mΩ in new condition

Insulation resistance measured with

500 V DC, for 1 min

> 10¹⁴ Ω contact to contact

> 10¹³ Ω contact to earth

Capacitance

1 pF contact to contact

3,5 pF between 2 full segment
wafers

Test voltage at 50 Hz and 60% relative humidity, for 1 min

1000 V rms contact to contact

1000 V rms contact to earth

Special Options Type 06

Ordering an option

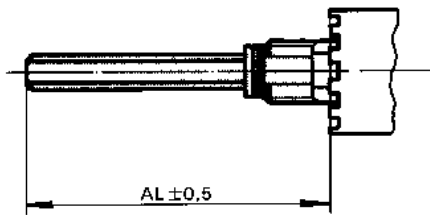
To order a special option please use the order form on page 119. Please specify your requirements and fax it to your local contact or to Elma.

Number of switching modules

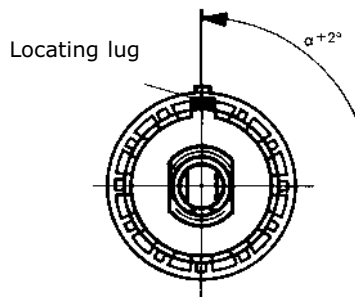
Up to 5 switching modules with 1 mechanism is standard. Options are 5 to 8 modules and 2 poles each and mechanism with increased torque.

Special shaft length

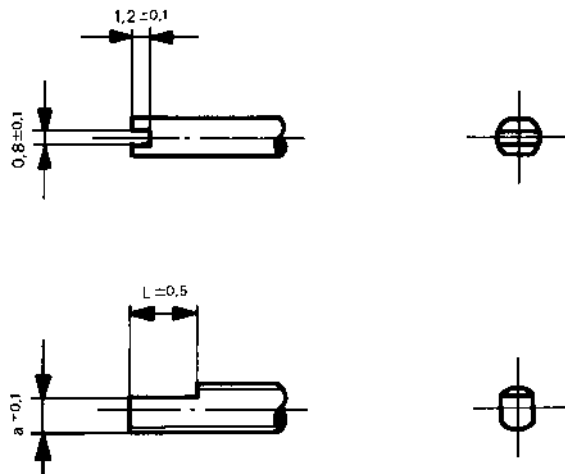
To order, state the shaft length AL as shown in diagram, measured from mounting face. Specify shaft length on page 119.



Special types of shaft



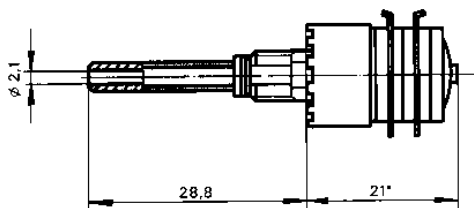
Angle in ° from locating lug.
Switch on position 1



Specially machined shafts are available. Please specify dimensions on page 119.

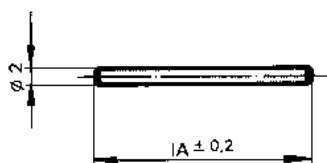
Hollow shaft

Available for switches up to 4 wafers; inner shaft (∅ 2 mm) to be ordered separately. Please complete order form on page 119.



Inner shaft

For switches with mounting plate or hollow shaft. Inner shafts must be ordered separately. Please state exact length on order form page 119.

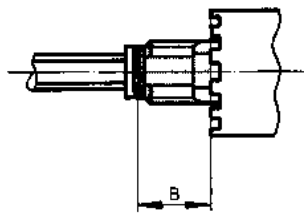
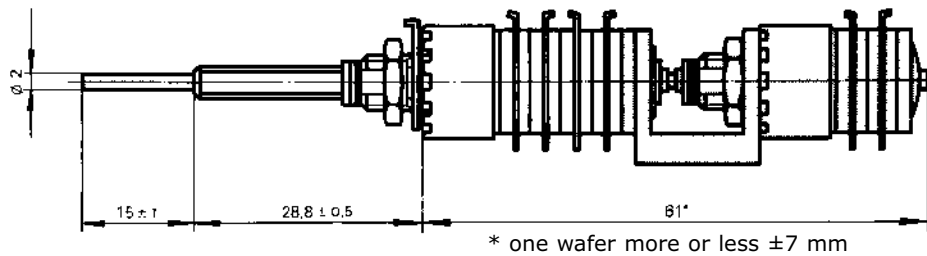


Special Options Type 06

Switches with 2 drive shafts

Consisting of a hollow outer plus an inner shaft. The inner shaft driving a maximum of 4 wafers with 4 wipers each. Please give type description of each switch.

Please complete order form on page 119.



Shortened bushing

Please state dimension B. (Dimension B = min. 4.5 mm).
Please complete order form on page 119.

Ordering Code Type 06

This code specifies the function of the switch

0	6	-	X	X	X	X	-	X	X	X	X	X
								Options				

Switch Type

Number of wafers

Number of poles

Factory set character

0 = gold flash shorting
1 = gold flash non-shorting
3 = gold flash 3 µm shorting
4 = gold flash 3 µm non-shorting

Md = Switching torque
AL = Shaft length
BG = Special end stop

00 = Standard
11 = BG 11 Pos.
10 = BG 10 Pos.
09 = BG 9 Pos.
08 = BG 8 Pos.
07 = BG 7 Pos.
06 = BG 6 Pos.
05 = BG 5 Pos.
04 = BG 4 Pos.
03 = BG 3 Pos.
02 = BG 2 Pos.
(BG = special end stop)

000 = Standard AL 33,6
z. B. 18,5mm = 185
(AL = shaft length)

- = Standard Md 6 Ncm
M = Md (torque) 3 Ncm
N = Md (torque) 9 Ncm

