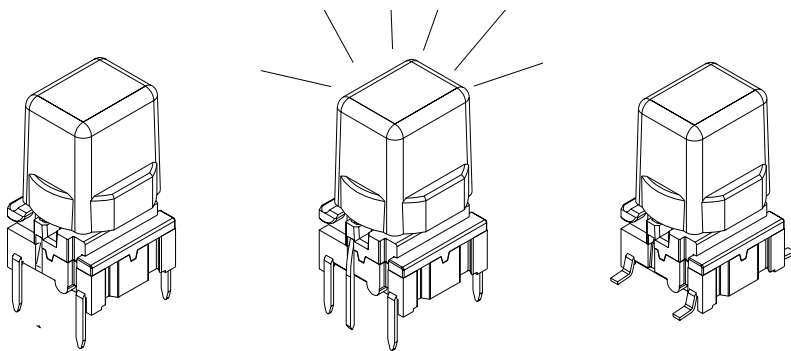


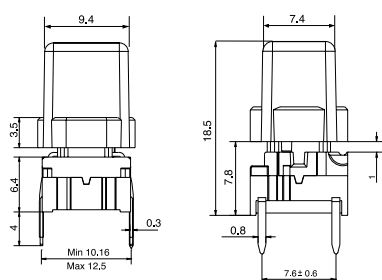
# multimec® 3F+1X



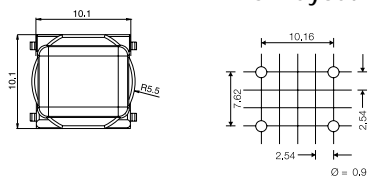
## Technical Data:

- through-hole or SMD
- 50mA/24VDC
- single pole/momentary
- 10.000.000 operations life time
- IP67 sealing
- temperature range:  
low temp: -40/+115°C  
high temp: -40/+160°C

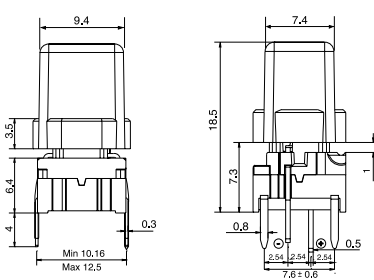
## Dimensions (through-hole)



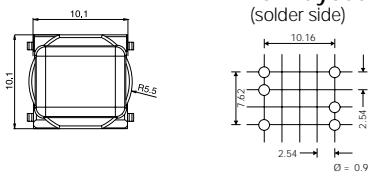
### PCB layout



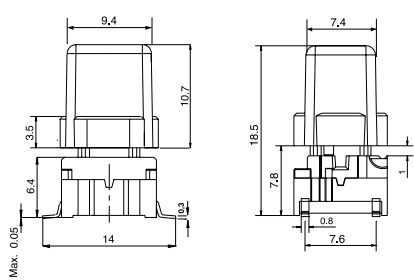
## Dimensions (w/LED)



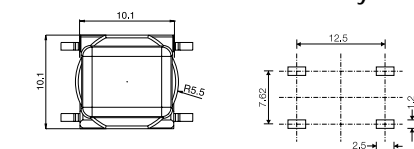
### PCB layout (solder side)



## Dimensions (SMD)




### PCB layout



## HOW TO ORDER

<b>3 F</b>	<input type="checkbox"/>	<input type="checkbox"/>	+	<input type="checkbox"/>	<input type="checkbox"/>
Switch	Mounting	L 6 low temp. H 9 high temp.		Cap	00 blue 02 green 03 grey 04 yellow 06 white 08 red 09 black custom colours on request
	T through-hole S surface mount				1X

Standard versions:  
3FTL6, 3FTH9, 3FSH9

<b>3 F</b>	<b>T</b>	<input type="checkbox"/>	<input type="checkbox"/>	+	<input type="checkbox"/>	<input type="checkbox"/>
Switch	Mounting	L 6 low temp. H 9 high temp.	LED		Cap	11 transparent
	T through-hole		00 blue 20 green 2040 green/yellow 40 yellow 80 red 8020 red/green 8040 red/yellow			1X

Standard versions:  
3FTL620, 3FTL640, 3FTL680

Combinations of high temperature switches with LEDs will be limited by the temperature capability of the LED.

Dimensions (mm)

Unless otherwise specified, all tolerances ±0.2

Ordering example: 3FTL6 +1X09 or 3FTL680 +1X11

mec Industriparken 23 · P.o. Box 26 · DK-2750 Ballerup · Denmark

Tel.: +45 44 97 33 66 · Fax: +45 44 68 15 14 · E-mail: danmec@mec.dk · www.mec.dk.