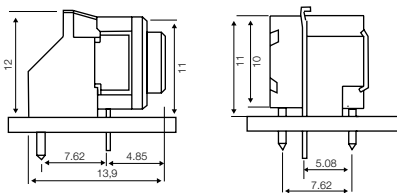


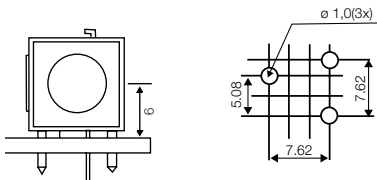
Technical Data:

- through-hole only
- 50mA/24VDC
- single pole/momentary
- 10.000.000 operations life time
- IP67 sealing
- temperature range:
low temp: -40/+115 °C

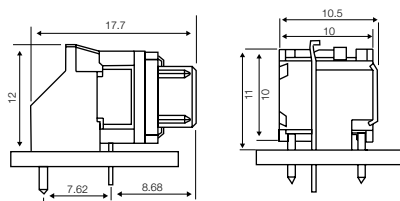
Dimensions



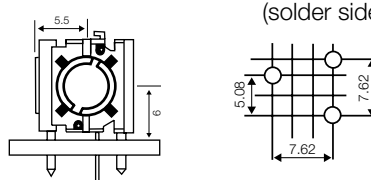
PCB layout



Dimensions



PCB layout (solder side)



HOW TO ORDER

3

Switch
3C
3F

T

Mounting
T through-hole

L 6

L 6 low temp.

R A S

Right angle support

Standard versions:

3CTL6RAS - for overlay

3FTL6RAS - for caps 1D - 1K - 1P - 1S09

Ordering example: 3CTL6RAS