

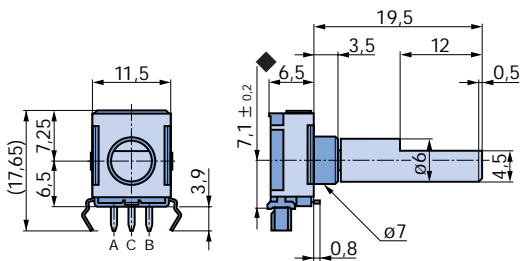
# Mechanical Encoders

## Incremental Encoder Type E27

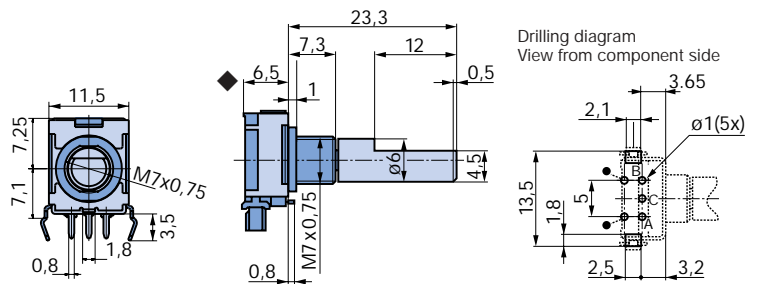
- 16 or 30 detent
- >100'000 rotations (1,5 Ncm)
- with or without push button function
- up to 2,5 Ncm torque (standard 1,5 Ncm)
- aluminium spindle-shaft
- IP 65 available



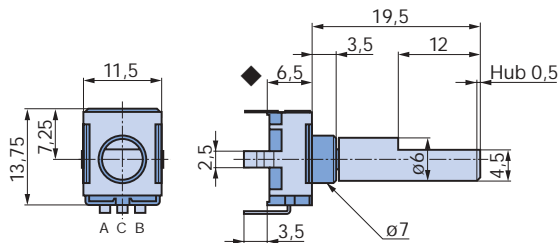
### Horizontal



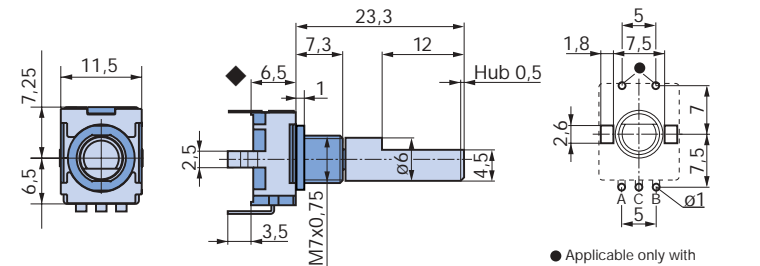
### for panel mounting (nut supplied)



### Vertical



### for panel mounting (nut supplied)



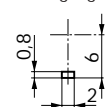
◆ Applicable only on the version with integrated push button function. Height of switch housing is reduced to 5,3 mm from 6,5 mm for the version without integrated push button function.

● Applicable only with integrated push button function.

### Possible modifications on request

- special type of shaft
- special torque
- waterproof

Front panel cut out locating lug



Designation		no panel mounting	for panel mounting
with integrated push button function	horizontal	E27-0-11101AL001	E27-0-11151AL011
1,5 Ncm	vertical	E27-0-21101AL001	E27-0-21151AL011
without integrated push button function	horizontal	E27-0-10101AL001	E27-0-10151AL011
1,5 Ncm	vertical	E27-0-20101AL001	E27-0-20151AL011

without stop, with position indexing

packing unit: 80 pieces

1 mm = 0.04 inch, 1 inch = 25.4 mm

Items available from stock!

Technical Data and Modified Versions see page 83-88