

TYPICAL INDICATOR ORDERING EXAMPLE

LB **01** **G** **W01** — **5C12** — **JC**

SHAPES	
01	Square
02	Round
03	Rectangular

HOUSING	
K	Black
G	Grey

TERMINALS	
W01	Silver Solder Lug/ Quick Connect Terminals

LAMPS

Incandescent Lamp	
05	5-volt
12	12-volt
28	28-volt

Incandescent or Neon Lamp	
01	110-volt Neon
05	5-volt Incandescent
12	12-volt Incandescent
28	28-volt Incandescent

Standard LED used w/LED Cap	
C	Red
D	Amber
F	Green

Bright LED			
Colors		Resistor	
5C	Red	No Code	No Resistor
5D	Amber	05	5-volt
		12	12-volt
5F	Green	24	24-volt

Super Bright LED	
6B	White
6F	Green
6G	Blue

CAP TYPES & COLOR COMBINATIONS

Solid Cap: Lens/Filter Colors	
BJ	White/Clear
CJ	Red/Clear
EJ	Yellow/Clear
FJ	Green/Clear
GJ	Blue/Clear

Insert Cap: Lens/Filter Colors	
JB	Clear/White
JC	Clear/Red
JE	Clear/Yellow
*JF	Clear/Green
*JG	Clear/Blue

* JF & JG not suitable with neon.

LED Cap: Lens/Diffuser Colors	
JB	Clear/White
JC	Clear/Red
JD	Clear/Amber
JF	Clear/Green

LED Cap: Lens/Diffuser Colors	
JB	Clear/White
JC	Clear/Red
JD	Clear/Amber
JF	Clear/Green

LED Cap: Lens/Diffuser Colors	
JB	Clear/White

DESCRIPTION FOR
TYPICAL ORDERING EXAMPLE
LB01GW01-5C12-JC

12-volt Bright Red
LED with Resistor



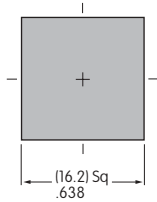
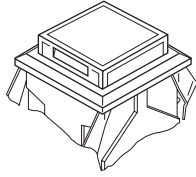
Clear Cap with Red Diffuser

Square Shape and
Gray Housing

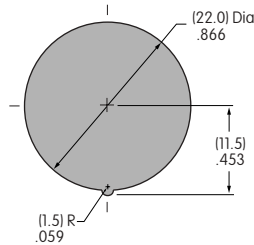
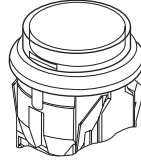
Silver Solder Lug/Quick Connect
Terminals

SHAPES

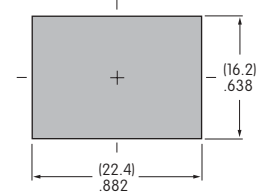
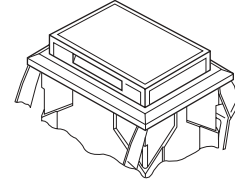
01 .622" Square



02 .854" Round



03 .622" x .866" Rectangular



Panel Thickness: 1 ~ 4mm (.039" ~ .157")

HOUSING

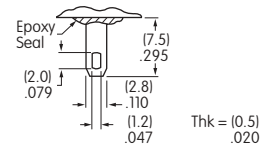
Housing Colors Available:



TERMINALS


W01 Silver Solder Lug/.110" Quick Connect

The .047" x .079" oblong hole accommodates one solid 18-gauge wire or two solid or stranded 20-gauge wires.




LAMP CODES & SPECIFICATIONS

Incandescent Lamp for Solid Colored and Colored Insert Caps

AT607  T-1 Bi-pin		05	12	28 *	* Lamp life is significantly reduced in applications with DC current, high shock, vibration, and flashing or continuous illumination.	
	Voltage	V	5V AC	12V AC		28V AC
	Current	I	115mA	60mA		22mA
	Endurance	Hours	7,000 average			



Neon Lamp for Colored Insert Cap

AT607N  T-1 Bi-pin		01	
	Voltage	V	110V AC
	Current	I	1.5mA
	Endurance	Hours	10,000 average
	Recommended Resistors:	33K ohms for 110V AC 100K ohms for 220V AC	


LED CODES & SPECIFICATIONS

Electrical specifications are determined at a basic temperature of 25°C. Lamp circuit is independent of switch operation.
 Single color LEDs are colored in OFF state. Bicolor LED is translucent white in OFF state.
 For dimension drawings of lamps see Accessories & Hardware Index (page Y1).
 If the source voltage is greater than rated voltage, a ballast resistor is required.
 The ballast resistor calculation and more lamp detail are shown in the Supplement; see Supplement Index (page Z1).

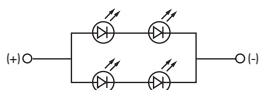
Standard Single Element LED

AT614   T-1 Bi-pin	Color	C Red	D Amber	F Green	
	Forward Peak Current	I_{FM}	50mA	50mA	50mA
	Continuous Forward Current	I_F	40mA	40mA	40mA
	Forward Voltage	V_F	1.75V	2.35V	2.35V
	Reverse Peak Voltage	V_{RM}	4V	4V	4V
	Current Reduction Rate Above 25°C	ΔI_F	0.67mA/°C		

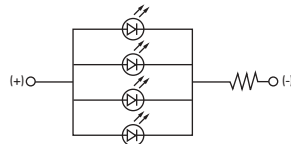
Bright Quad Element LED

AT626 No Resistor AT627 with Resistor  T-1 Bi-pin	Color Codes	5C Red	5D Amber	5F Green				
			No Resistor (AT626)			With Resistor (AT627)		
			Red No Code	Amber No Code	Green No Code	05	12	24
	Forward Peak Current	I_{FM}	40mA	40mA	40mA	—	—	—
	Continuous Forward Current	I_F	26mA	26mA	26mA	52mA	26mA	13mA
	Forward Voltage	V_F	3.8V	4.0V	4.4V	5V	12V	24V
Reverse Peak Voltage	V_{RM}	8V	8V	8V	4V	8V	16V	
Current Reduction Rate Above 25°C	ΔI_F	0.50mA/°C			0.50mA/°C			

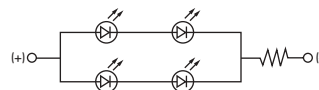
AT626 4-Element without Resistor



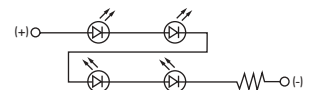
AT627 5 volt, 4-Element with Resistor






AT627 12 volt, 4-Element with Resistor



AT627 24 volt, 4-Element with Resistor



Super Bright Single Element LED

AT625G Blue AT631B White AT632F Green   T-1 Bi-pin		Color	6B White	6F Green	6G Blue
	Forward Peak Current	I_{FM}	30mA	30mA	30mA
	Continuous Forward Current	I_F	20mA	20mA	20mA
	Forward Voltage	V_F	3.6V	3.5V	3.6
	Reverse Peak Voltage	V_{RM}	5V	5V	5V
	Current Reduction Rate Above 25°C	ΔI_F	0.50mA/°C		

CAP TYPES & COLOR COMBINATIONS

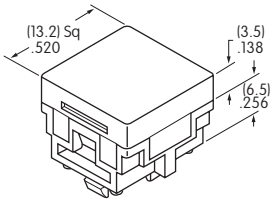
Color Codes: A Black B White C Red D Amber E Yellow F Green G Blue J Clear

Solid Cap for Incandescent Lamp

Lens/Filter
Colors Available:

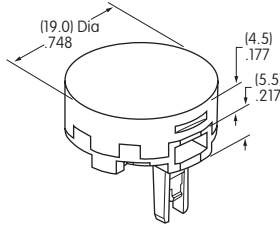
BJ

AT476
Square



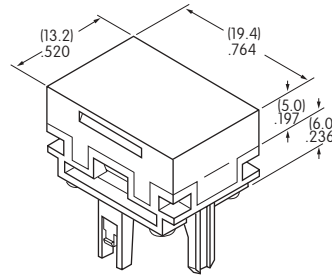
CJ

AT4012
Round



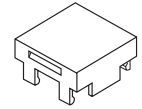
EJ

AT4026
Rectangular

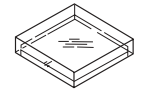


FJ

GJ



Translucent Colored Lens



Transparent Clear Filter



Lamp AT607

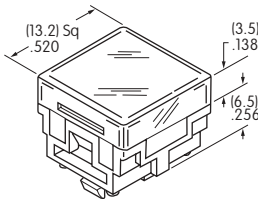
Material: Polycarbonate Finish: Glossy

Insert Cap for Incandescent or Neon Lamp

Lens/Filter
Colors Available:

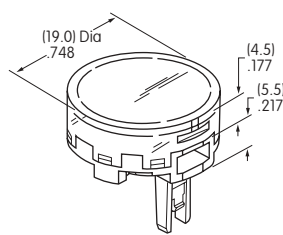
JB

AT477
Square



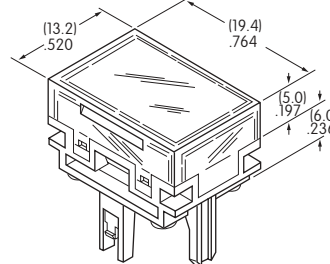
JC

AT4013
Round



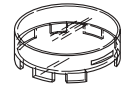
JE

AT4027
Rectangular

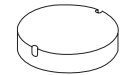


JF

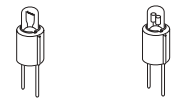
JG



Transparent Clear Lens



Translucent Colored Filter



Lamps AT607 or AT607N

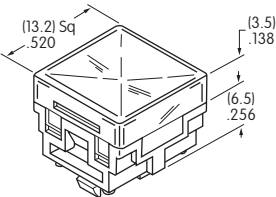
JF & JG not suitable with neon. Material: Polycarbonate Finish: Glossy

Cap for Standard & Bright LEDs

Lens/Diffuser
Colors Available:

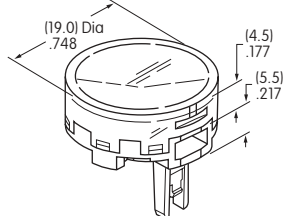
JB

AT478 for Standard
AT4162 for Bright
Square



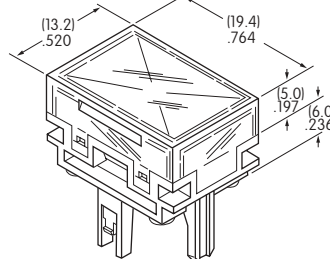
JC

AT4014 for Standard
AT4164 for Bright
Round

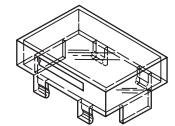


JD

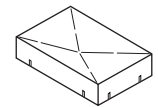
AT4028 for Standard
AT4163 for Bright
Rectangular



JF



Transparent Clear Lens



Translucent Colored Diffuser



Standard LED AT614



Bright LEDs AT626 AT627

Material: Polycarbonate Finish: Glossy

CAP TYPES & COLOR COMBINATIONS

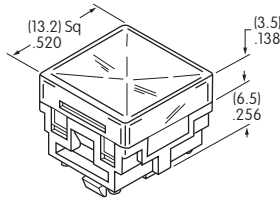
Cap for Super Bright LED

Lens/Diffuser
Colors Available:

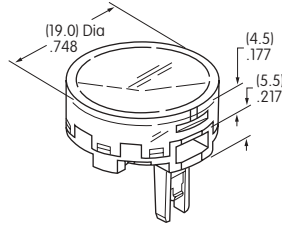


Clear/
White

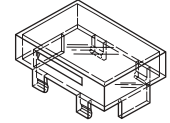
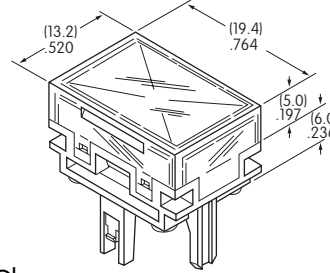
AT4129
Square



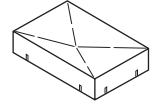
AT4128
Round



AT4130
Rectangular



Transparent Clear Lens



Translucent White Diffuser



LED AT625 AT631 AT632

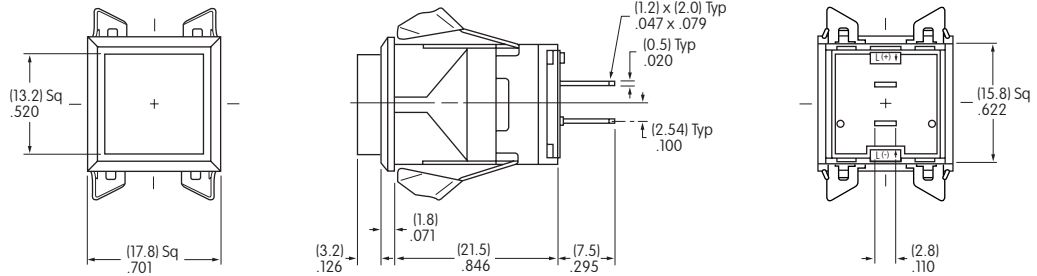
Material: Polycarbonate Finish: Glossy

TYPICAL INDICATOR DIMENSIONS

Square



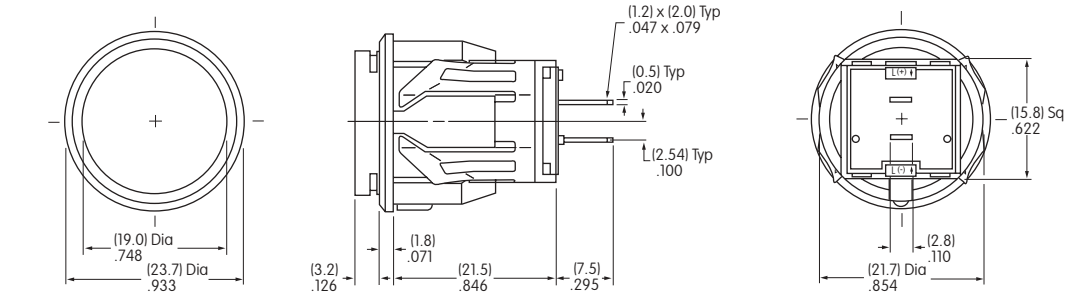
LB01KW01-12-CJ



Round



LB02KW01-12-CJ



Rectangular



LB03KW01-12-CJ

