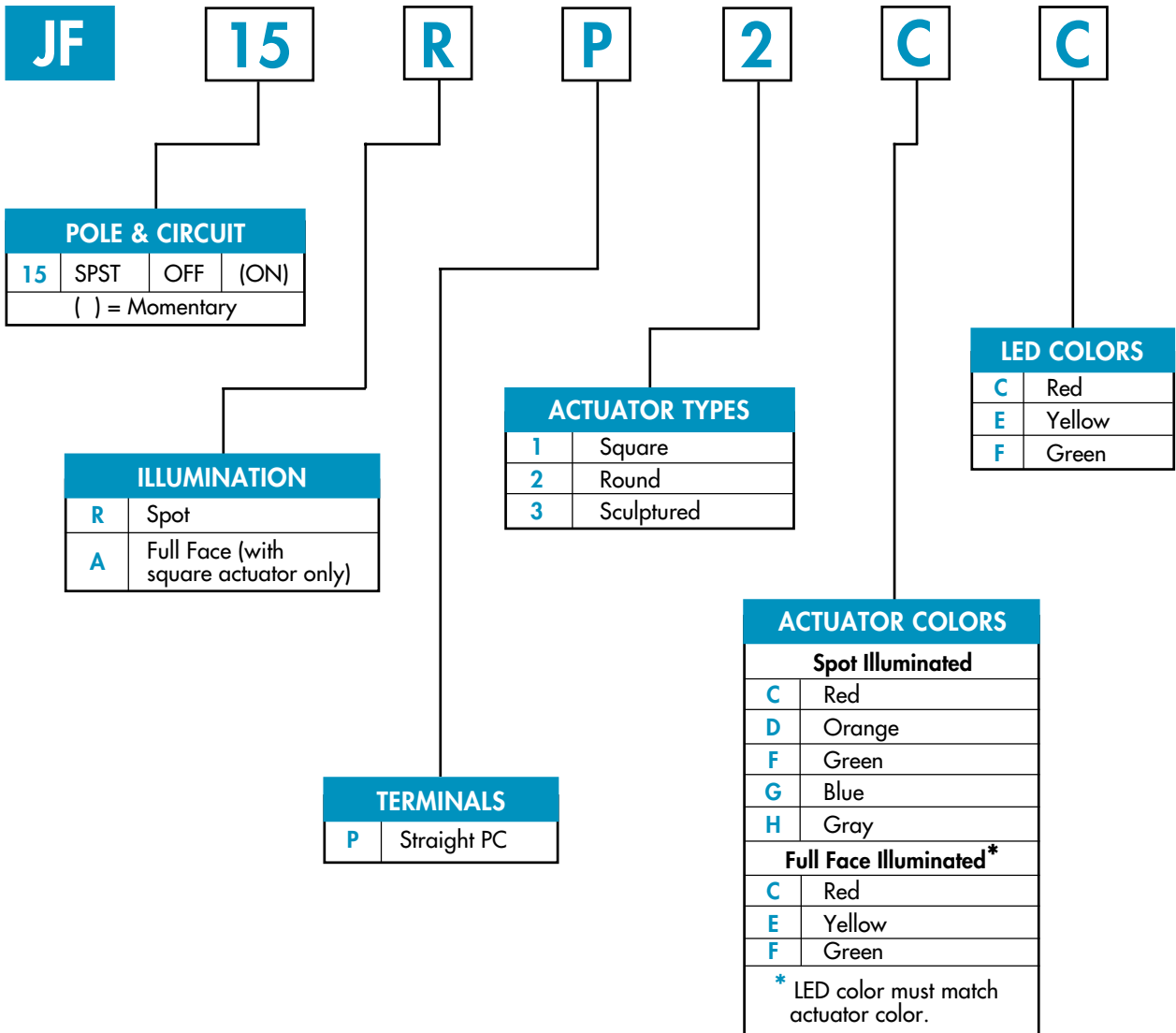
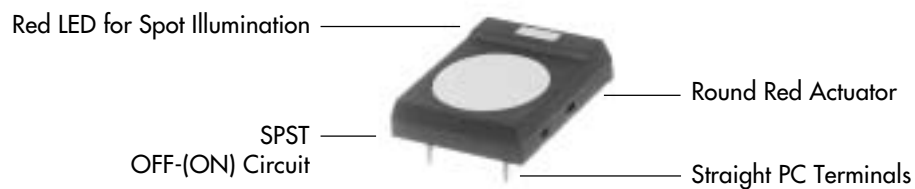


## TYPICAL SWITCH ORDERING EXAMPLE



### DESCRIPTION FOR TYPICAL ORDERING EXAMPLE

**JF15RPP2CC**



## GENERAL SPECIFICATIONS

### Electrical Capacity (Resistive Load)

**Power Level:** 50mA @ 24V DC

### Other Ratings

**Contact Resistance:** 50 milliohms maximum  
**Insulation Resistance:** 500 megohms minimum @ 250V DC  
**Dielectric Strength:** 250V AC minimum  
**Mechanical Life:** 500,000 operations minimum  
**Electrical Life:** 500,000 operations minimum  
**Nominal Operating Force:** 306 grams for flush actuator  
 204 grams for sculptured actuator  
**Contact Bounce:** 0.1 millisecond maximum  
**Total Travel:** 0.4mm (.016") for flush actuators; 0.8mm (.031") for sculptured actuator

### Materials & Finishes

**Actuator:** Polyamide for spot illuminated; polycarbonate for full face  
**Case:** Glass fiber reinforced polyamide  
**Seal:** Nitrile butadiene rubber  
**Base:** Glass fiber reinforced polyester  
**Movable Contact:** Phosphor bronze with silver plating  
**Stationary Contacts:** Brass with silver plating  
**Terminals:** Brass with silver plating

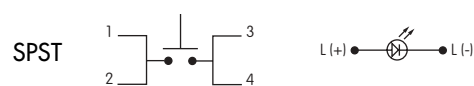
### Environmental Data

**Operating Temp Range:** -25°C through +50°C (-13°F through +122°F) for full face;  
 -25°C through +70°C (-13°F through +158°F) for all others  
**Humidity:** 90 ~ 95% humidity for 96 hours @ 40°C (104°F)  
**Vibration:** 10 ~ 55Hz with peak-to-peak amplitude of 1.5mm traversing the frequency range  
 & returning in 1 minute; 3 right angled directions for 2 hours  
**Shock:** 50g acceleration (tested in 6 right angled directions, with 5 shocks in each direction)

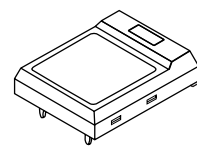
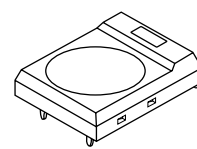
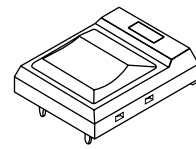
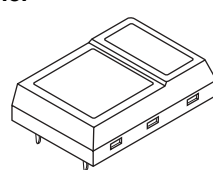
### Installation

**Soldering Time & Temperature:** 3 seconds @ 350°C or 5 seconds @ 270°C  
**Process Seal:** See Supplement Index (page Z1) for specific processing data.

### POLE & CIRCUIT

		Actuator Position ( ) = Momentary		Switch Throw & Schematics	Note: Terminal numbers are shown on switch. LED circuit is isolated and requires external power source.
Pole	Model	Normal	Down		
SP	JF15	OFF	(ON)	SPST 	

### ILLUMINATION & ACTUATOR TYPES

R Spot Illumination			A Full Face Illumination	
1 Square Actuator	2 Round Actuator	3 Sculptured Actuator	1 Square Actuator	
				
Actuator Colors Available: C, D, F, G, H Housing is black.			Actuator Colors Available: C, E, F Housing is black.	

Color Codes:



Red



Orange



Yellow



Green



Blue



Gray

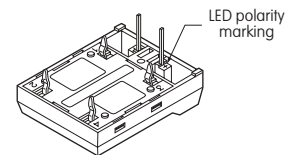
### TERMINALS



#### P Straight PC

With isolated lamp circuit

Further details shown in Typical Switch Dimensions.



### LED COLORS & SPECIFICATIONS

LEDs are supplied as an integral part of the switch.

The electrical specifications shown are determined at a basic temperature of 25°C.

If the source voltage exceeds the rated voltage, a ballast resistor is required.

The resistor value can be calculated by using the formula in the Supplement; see Supplement Index (page Z1).

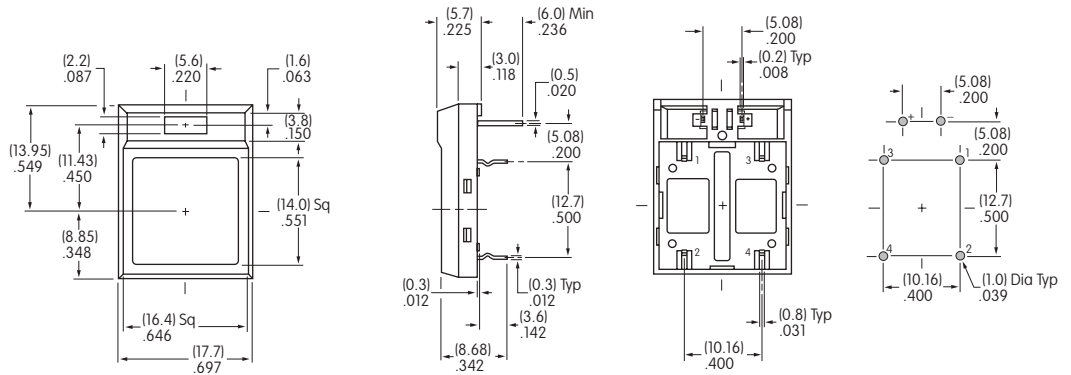
		Spot Illumination			Full Face Illumination		
Color:		C	E	F	C	E	F
		Red	Yellow	Green	Red	Yellow	Green
Forward Peak Current	$I_{FM}$	40mA	40mA	40mA	30mA	30mA	30mA
Continuous Forward Current	$I_F$	30mA	30mA	30mA	20mA	20mA	20mA
Forward Voltage	$V_F$	1.7V	2.2V	2.2V	1.77V	2.1V	2.15V
Reverse Peak Voltage	$V_{RM}$	4V	4V	4V	4V	4V	4V
Current Reduction Rate Above 25°C	$\Delta I_F$	0.67mA/°C	0.67mA/°C	0.67mA/°C	0.4mA/°C	0.4mA/°C	0.4mA/°C

### TYPICAL SWITCH DIMENSIONS

#### Spot Illuminated with Square Actuator



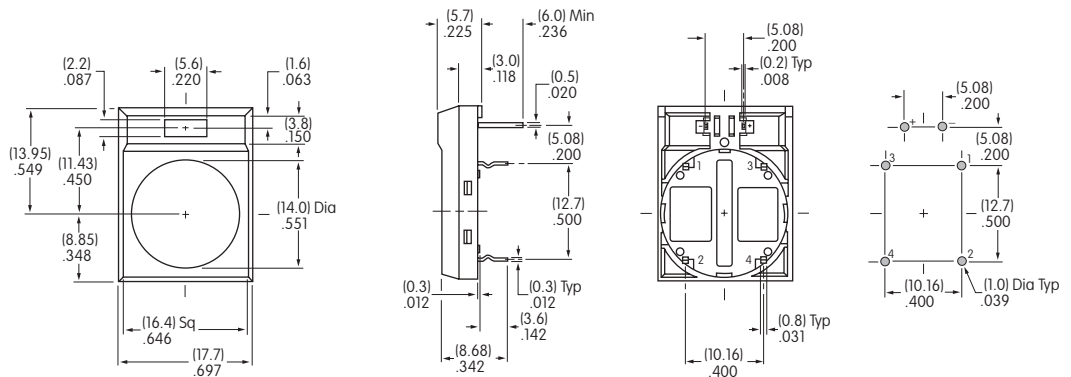
JF15RP1CC



#### Spot Illuminated with Round Actuator



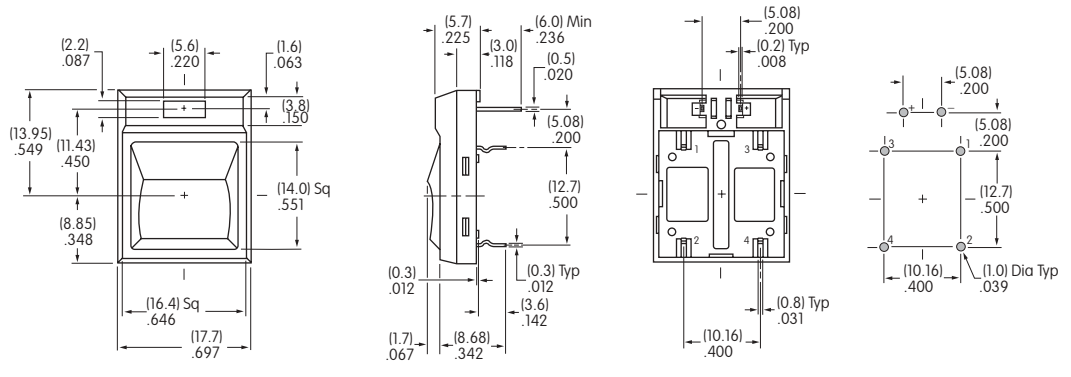
JF15RP2CC



#### Spot Illuminated with Sculptured Actuator



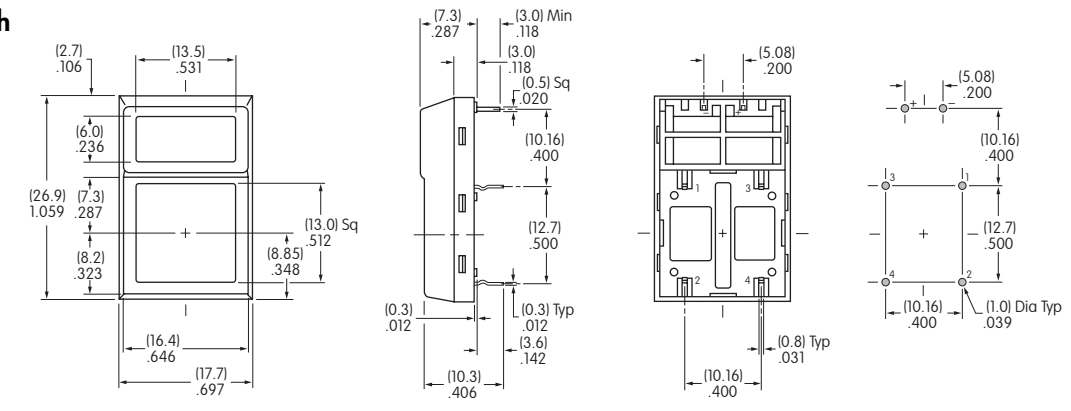
JF15RP3CC



#### Full Face Illuminated with Square Actuator



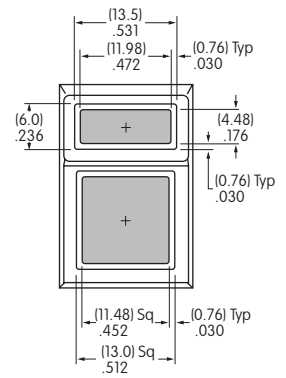
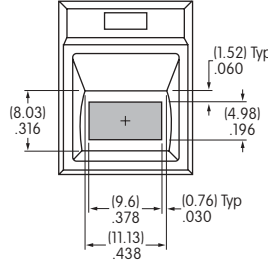
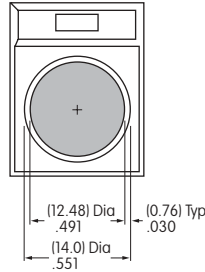
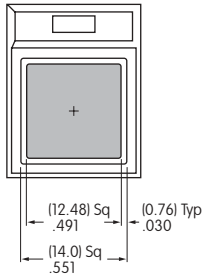
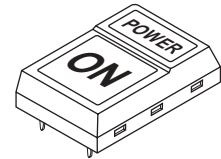
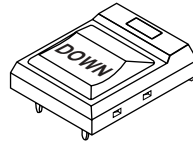
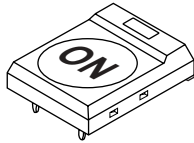
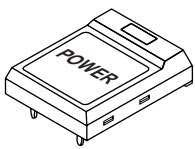
JF15AP1CC



**LEGENDS**

General information and basic specifications are presented here for customers who want to do their own legends.

**Suggested Printable Area**



**Recommended Print Method:**

Screen Print or Pad Print

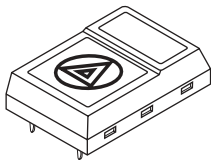
Epoxy based ink is recommended.

Shaded areas are printable areas.

**Additional Method**

Engraving is not recommended as an additional method for legends. Contact factory if engraving is required; it must be done before the actuator is assembled.

**LEGEND PACKET FOR ORDERING SWITCHES WITH LEGENDS**



1. To order switches with legends contact the factory and request the JF Illuminated Legend Packet.
2. Once you determine your desired legend, fill out the ordering work sheet included in the packet.
3. Return the completed work sheet to receive a quotation.