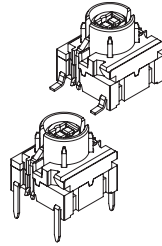


# multimec® illumec 4F

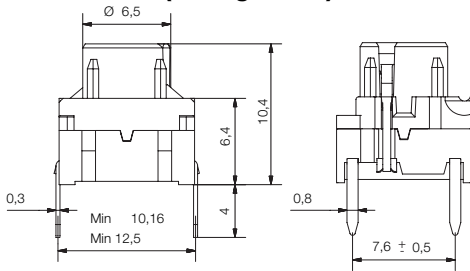


## Technical Data:

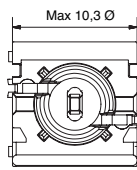


- SMD or through-hole
- 50mA/24VDC
- single pole/momentary
- 10.000.000 operations life time
- IP67 sealing
- Temperature range:  
LED: -30/+85°C

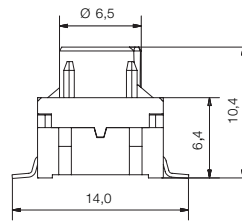
## Dimensions (through-hole)



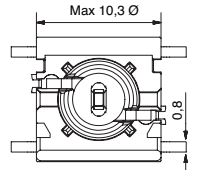
## TOPVIEW



## Dimensions (SMD)

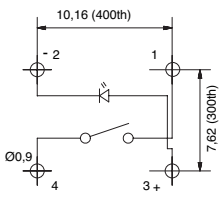


## TOPVIEW

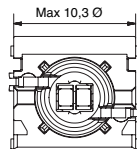
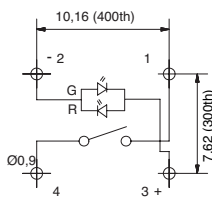


## PCB layout and Circuit Diagram

### 1 LED

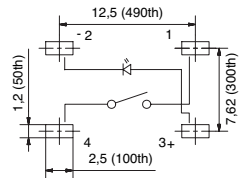


### 2 LEDS

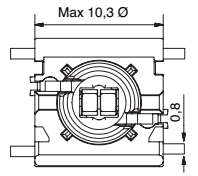
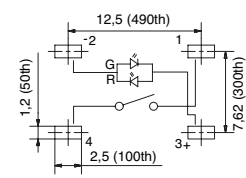


## PCB layout and Circuit Diagram

### 1 LED



### 2 LEDS



## HOW TO ORDER



<b>Switch</b>	<b>Mounting</b>	<b>LED</b>	<b>Illuminated Cap</b>
4	SH9 surface mount	01	
F	TH9 through-hole	21	
		42	
		61	
		82	
		2142	
		8221	
		8242	

## COLOUR CODE

<b>1D</b> 11,16	<b>Cap</b>	<b>Solid Colour Lens</b>
<b>1K</b> 1116		
<b>1N</b> 10,12,14,16,18		<b>1E</b> Solid colour + lens 1,2,4,6,8
<b>1S</b> 11		<b>1F</b> Solid colour + lens 1,2,4,6,8
<b>1T</b> 16		<b>1Q</b> Solid colour + lens 1,6
<b>1U</b> 16		<b>1R</b> Solid colour + lens 1,6
<b>1V</b> 16		
<b>1X</b> 11		

See solid colour codes on our website: [www.mec.dk](http://www.mec.dk)

## COLOUR CODES

<b>LED</b>	<b>Illuminated Cap</b>	<b>Lenses</b>
<b>01</b> blue	<b>10</b> frosted blue	<b>1</b> transparent
<b>21</b> green	<b>11</b> transparent	<b>2</b> green
<b>42</b> yellow	<b>12</b> frosted green	<b>4</b> yellow
<b>61</b> white	<b>14</b> frosted yellow	<b>6</b> frosted white
<b>82</b> red	<b>16</b> frosted white	<b>8</b> red
<b>2142</b> green/yellow	<b>18</b> frosted red	
<b>8221</b> red/green		
<b>8242</b> red/yellow		

Technical information on 4F switch and LEDs as well as dimensions for each cap can be downloaded on [www.mec.dk](http://www.mec.dk)