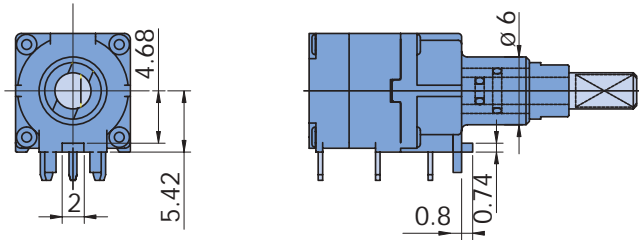
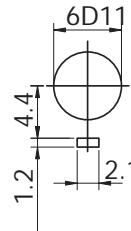


Coded Switches Type C07

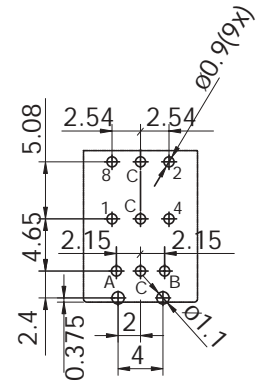
Horizontal



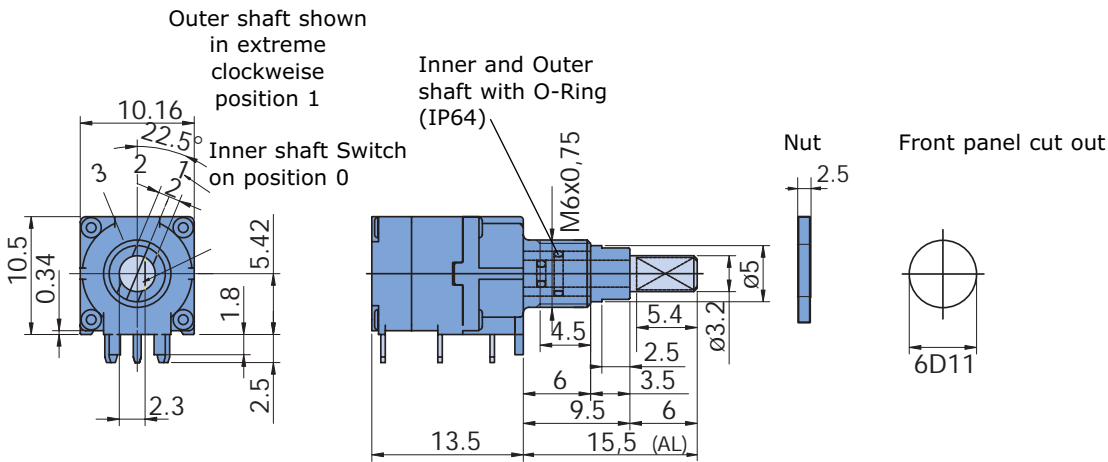
Front panel cut out



Drilling diagram view from component side



Horizontal for panel mounting



Description

Hexadecimal with one pole 3 pos. center off or Gray Code 0-F with one pole 3 pos. center off.

Horizontal position with or without panel mounting.

Operation by stainless steel shaft (knob).

Not washable

Rotation with positive detent setting

Solid tinned terminals (0,4 x 0,7 mm)

Terminations for direct mounting on circuit boards

HEX and Gray Code 2,54 mm (0.1") pitch one pole 3 pos. center off 2,15 mm, 2,395 mm

Indexing positions, end stop 16 positions with stop between the first and last position and 3 position (one pole 3 pos. center off)

Wave or reflow soldering

Coded Switches Type C07

Technical information

Mechanical data

Indexing mechanism
16 pos. and 3 pos. 22,5°

Switching torque
16 pos.: 2,0 Ncm to 5,0 Ncm
3 pos.: 3,0 Ncm to 6,0 Ncm

Max. force on the end-stop
16 pos.: 40 Ncm
3 pos.: 24 Ncm

Panel mounting
admissible torque max. 100 Ncm

Temperature range
Storage temperature: -40 °C to +85 °C
Operating temperature: -25 °C to +70 °C

Operational Life
16 pos.: 10'000 switching cycles
3 pos.: 7'500 switching cycles

Material data

Die Case
Pressure cast, not plated

Body
high quality
temperature-resistant
thermoplastic

Spindle-shaft
stainless (steel)

Insulation
high quality thermoplastic

Contact parts
alloy copper > 3 µm gold plated

Soldering data

Handsoldering
Plastic wafer ≤ 5 s/≤ 260 °C

Machine soldering
Reflow (THR) ≤ 90 s/≤ 225 °C

Electrical data

Output
16 pos.: HEX, Gray Code
3 pos.: one pole 3 pos. center off

Application data
Voltage < 42 V
Current < 2 A

Switching capacity
5 VA

Switching voltage
≤ 24 V (resistive load)

Switching current
≤ 0,2 A (resistive load)

Test voltage at 50 Hz/i min
≥ 500 V ~

Insulation resistance at 500 V = 1 min
≥ 10¹¹ Ω

Contact and lead resistance
max. 1 Ω in new condition

Various

Assembled in cleanroom
Class 100 000, US Federal Standard

IP protection degree
both shafts are spray proof IP64

Coding

Outer Shaft

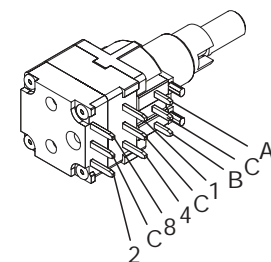
	A	B
1	●	
2		
3		●

Inner Shaft
Gray Code

	8	4	2	1
0				
1				●
2			●	●
3			●	
4		●	●	
5		●	●	●
6		●		●
7		●		
8	●	●		
9	●	●		●
A	●	●	●	●
B	●	●	●	
C	●		●	
D	●		●	●
E	●			●
F	●			

Inner Shaft
Coding HEX

	8	4	2	1
0				
1				●
2			●	
3			●	●
4		●		
5		●		●
6		●	●	
7		●	●	●
8	●			
9	●			●
A	●		●	
B	●		●	●
C	●	●		
D	●	●		●
E	●	●	●	
F	●	●	●	●



Order Form for Special Options for Coded Switches Type C07

Copy – Fill in – Fax

Quote request

Order

Company	Customer No.
Address	Phone
Name	Fax
Quantity	e-mail
Similar to order No.	Requested delivery date
Front panel mounting M6 x 0,75 (ZB)	Function <input type="checkbox"/> HEX with one pole 3 pos. center off (22,5°) <input type="checkbox"/> Gray Code with one pole 3 pos. center off (22,5°)
	<input type="checkbox"/> IP protection degree

Sketch (additional technical requirements / comments)

