

Bayonet Miniature Circular Connectors

R05 series / R29 series

- R05 series are small circular connectors with bayonet lock system. They are subminiature in size and are suited for a variety of electronic equipment.
- A wide variety of molded cable assemblies are available for your requirement.
- R29 series based on R05 series feature high density and miniaturization.

Specifications

Series	R05	R29
Connections	Bayonet Lock	
Termination	Solder	
Temperature and Humidity	-25°C to +85°C 85% Max.	
Number of Pins	2, 3, 5, 6, 8, 12	8, 12
Shell Material / Finish	Brass and Zinc Alloy / Nickel	
Contact Material / Finish	Copper Alloy / Gold over Nickel	
Corrosion Resistance	Salt Spray 5% 48h	

* See page 28 as for Electrical Specifications.



Plug / Normal Clamp Type
R05-PB5F



Jack / Normal Clamp Type
R05-JB5M



Flange Mount Receptacle
R05-RB5M



Bulkhead Mount Receptacle
R05-R5M



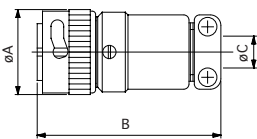
Plug / Screw Clamp Type
R05-P5F



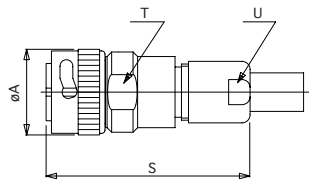
Jack / Screw Clamp Type
R05-J5M



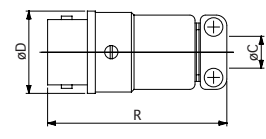
Bulkhead Mount Receptacle for Printed Circuit
R05-R5F2



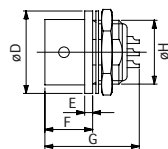
Plug / Normal Clamp Type



Plug / Screw Clamp Type



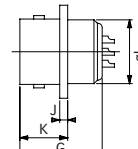
Jack / Normal Clamp Type



Bulkhead Mount Receptacle



Flange Mount Receptacle



Configuration

Series	Insert size	No. of Pins	Dimensions (mm)																	
			A	B	C	D	E	F	G	H	J	K	L	M	N	P	R	S	T	U
R05	6	2, 3, 5	13.0	32.5	5.2	12.0	2.0	9.5	18.0	9.0 P=0.5	1.5	10.5	9.0	10.5	15.0	2.2	32.0	35.5	10.5	9.5
	9	6, 8	16.0	34.5	6.2	15.5	2.0	9.5	18.0	12.0 P=0.8	1.5	10.5	12.0	13.0	17.5	2.2	34.0	38.0	13.5	10.5
	12	12	20.0	39.0	10.5	19.5	1.5	9.0	18.0	M16 P=1	1.5	10.5	16.0	17.0	22.5	2.8	39.0	38.0	13.5	10.5
R29	6	8	13.0	32.5	5.2	12.0	2.0	9.5	18.0	9.0 P=0.5	1.5	10.5	9.0	10.5	15.0	2.2	32.0	35.5	10.5	9.5
	9	12	16.0	34.5	6.2	15.5	2.0	9.5	18.0	12.0 P=0.8	1.5	10.5	12.0	13.0	17.5	2.2	34.0	38.0	13.5	10.5