

Subminiature Pushbutton Switches ESD proof



Specifications:

Contact rating:	max. 48 V AC/DC, 0,4 VA / max. 50 mA min. 20 mV AC/DC, 1 μ A
Contact resistance:	< 50 m Ω
Insulation resistance:	> 500 M Ω at 250 V DC
Dielectric strength:	500 V, 50 Hz for the duration of 1 minute
Operating temperature:	- 20° to + 80° C
Mechanical life:	minimum 50 000 operations
Contacts:	gold-plated over nickel barrier
Terminals:	PC terminals, tin-plated
Material:	case: PBT, meets UL 94 V-0, washable button: POM, meets UL 94 V-0, washable
Mounting:	on pc-board
Soldering conditions:	auto-soldering: - max.: 7 sec, 250° C \pm 5° C - max.: 5 sec, 270° C \pm 5° C
ESD resistance:	> 14 kV (between button and terminals)

Models:

Switching functions: when looking at the brand name,
the normally closed contact is on the right-hand side.

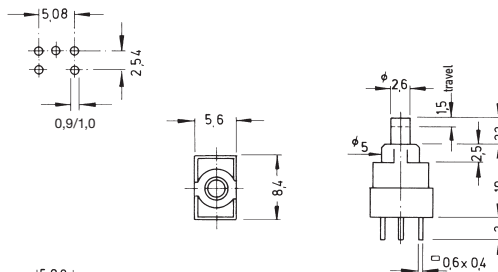
washable

SPDT

ESP 1 F

ESP 1 D

mom - on
on - on



DPDT

ESP 2 F

ESP 2 D

mom - on
on - on

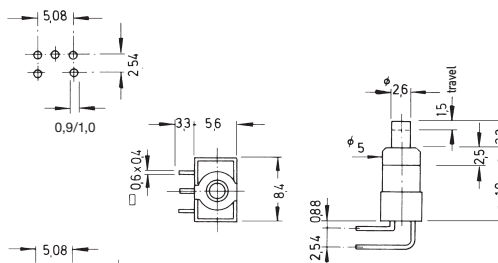


SPDT

ESP 1 F - RA

ESP 1 D - RA

mom - on
on - on

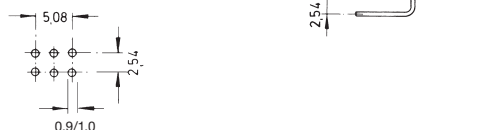


DPDT

ESP 2 F - RA

ESP 2 D - RA

mom - on
on - on



Plastic caps \varnothing 4 mm and 5 mm on request.