



Subminiature Toggle Switches ESD proof

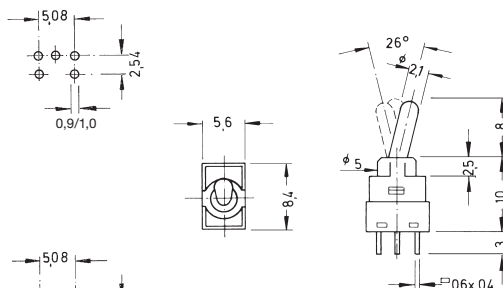
Specifications:

Contact rating:	max. 48 V AC/DC, 0,4 VA / max. 50 mA min. 20 mV AC/DC, 1 μ A
Contact resistance:	< 50 m Ω
Insulation resistance:	> 500 M Ω at 250 V DC
Dielectric strength:	500 V, 50 Hz for the duration of 1 minute
Temperature range:	- 20° to + 80° C
Mechanical life:	minimum 50000 operations
Contacts:	gold-plated over nickel barrier
Terminals:	PC terminals, tin-plated
Material:	case: PBT, meets UL 94 V-0, washable lever: POM, meets UL 94 V-0, washable
Mounting:	on pc-board
Soldering conditions:	auto-soldering – max.: 7 sec, 250° C \pm 5° C – max.: 5 sec, 270° C \pm 5° C
ESD resistance:	> 14 kV (between lever and terminals)

Models:	Switching functions:	the closed contacts are opposite to the lever position;
	Switching functions F/H:	when looking at the brand name on the left hand side.

S P D T

EST 1 D	on	-	on
EST 1 E	on	off	on
EST 1 F	mom	-	on
EST 1 G	mom	off	mom
EST 1 H	mom	off	on

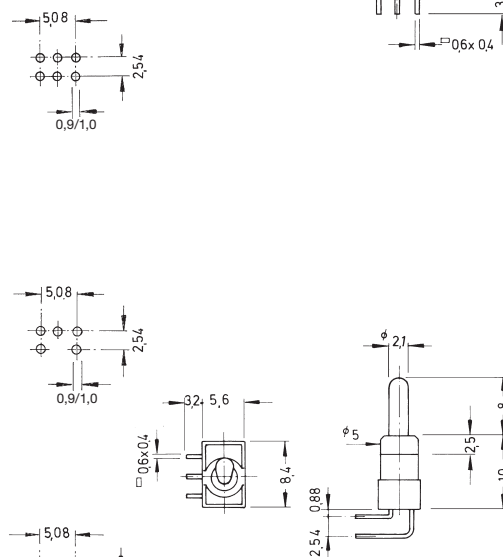


washable



D P D T

EST 2 D	on	-	on
EST 2 E	on	off	on
EST 2 F	mom	-	on
EST 2 G	mom	off	mom
EST 2 H	mom	off	on



S P D T

EST 1 D - RA	on	-	on
EST 1 E - RA*	on	off	on
EST 1 F - RA*	mom	-	on
EST 1 G - RA*	mom	off	mom
EST 1 H - RA*	mom	off	on

D P D T

EST 2 D - RA	on	-	on
EST 2 E - RA*	on	off	on
EST 2 F - RA*	mom	-	on
EST 2 G - RA*	mom	off	mom
EST 2 H - RA*	mom	off	on

* Non-stock item; minimum quantity and delivery time on request